



COASTAL PLAIN AREA
ECONOMIC OPPORTUNITY AUTHORITY

**2020-2021
ANNUAL REPORT**



TABLE OF CONTENTS

History	2
Organizational Chart	3
Message from the Board Chairman	4
Executive/Head Start Director	5
Board of Directors	6
Leadership Team	7
Community Services	8
CSBG	9
LIHEAP	12
Weatherization	13
Head Start	14
Locations	15
Service Area	16
Demographics	17
Enrollment	19
Family Engagement	20
Medical and Dental	21
Disability Services	23
Mental Health Services	24
CLASS Results	28
Readiness Goals	29
Additional Services	30



COASTAL PLAIN AREA
ECONOMIC OPPORTUNITY AUTHORITY

HISTORY

Coastal Plain Area Economic Opportunity Authority, Inc (CPAEOA) began as a program development grant from the Office of Economic Opportunity, and was awarded to the Coastal Plain Area Planning and Development commission on January 14, 1965. This grant enabled a program developer to begin the groundwork for the development of a community organization to serve the poor and elderly. This work led to the incorporation of the Coastal Plain Area Economic Opportunity Authority, Inc. on April 18, 1966, under the laws of the state of Georgia, as a private non-profit corporation serving the ten counties of the Coastal Plain area of Georgia effective April 1, 1966. The Agency superseded the area planning and development commission as the office of economic development.

CPAEOA is dedicated to providing services, assistance, and other activities designed to develop employment opportunities, improving human performance, motivation, and productivity, as well as by bettering the conditions under which people in the area live, learn, and work.

COASTAL PLAIN AREA E.O.A., INC. SERVICE AREA

LOWNDES

LANIER

ECHOLS

BROOKS

BERRIEN

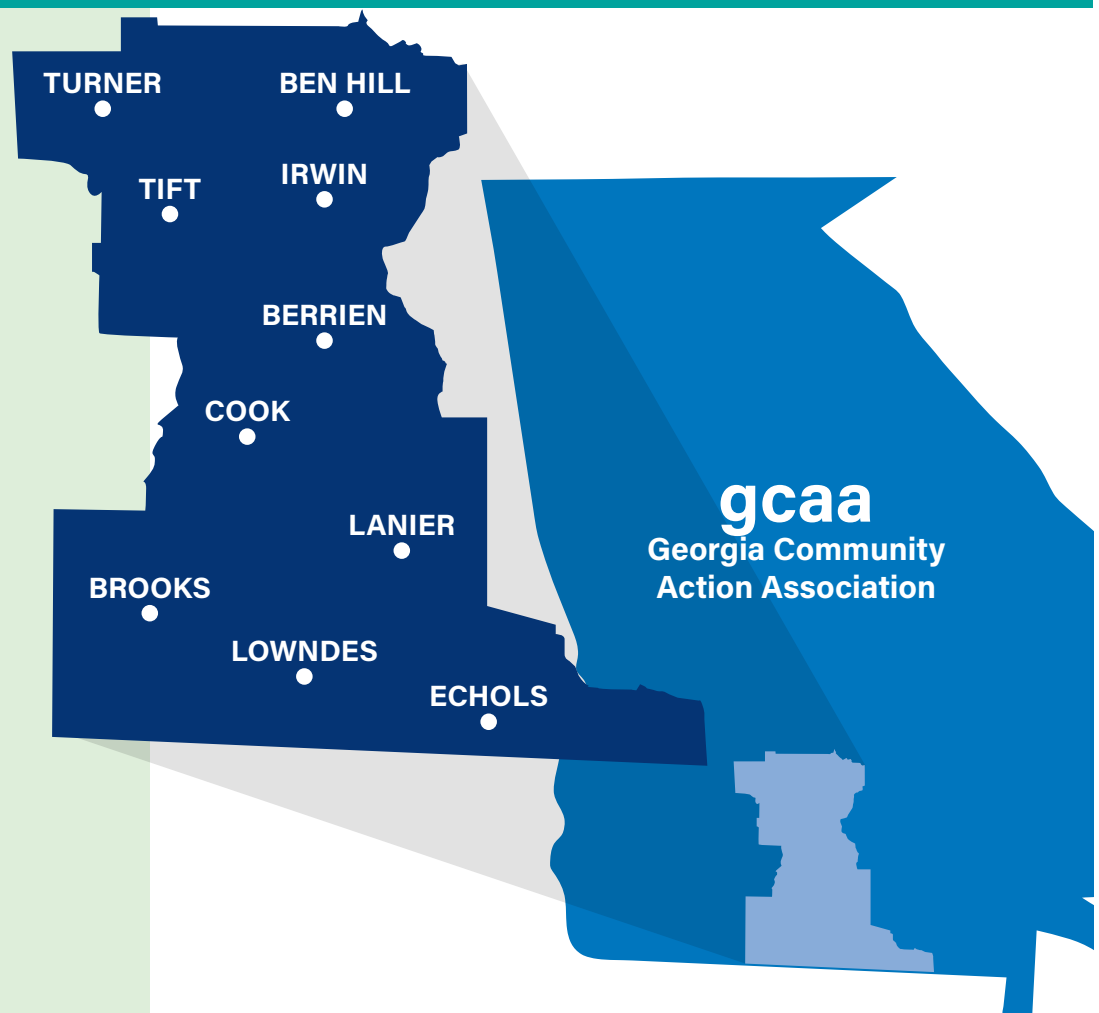
COOK

TIFT

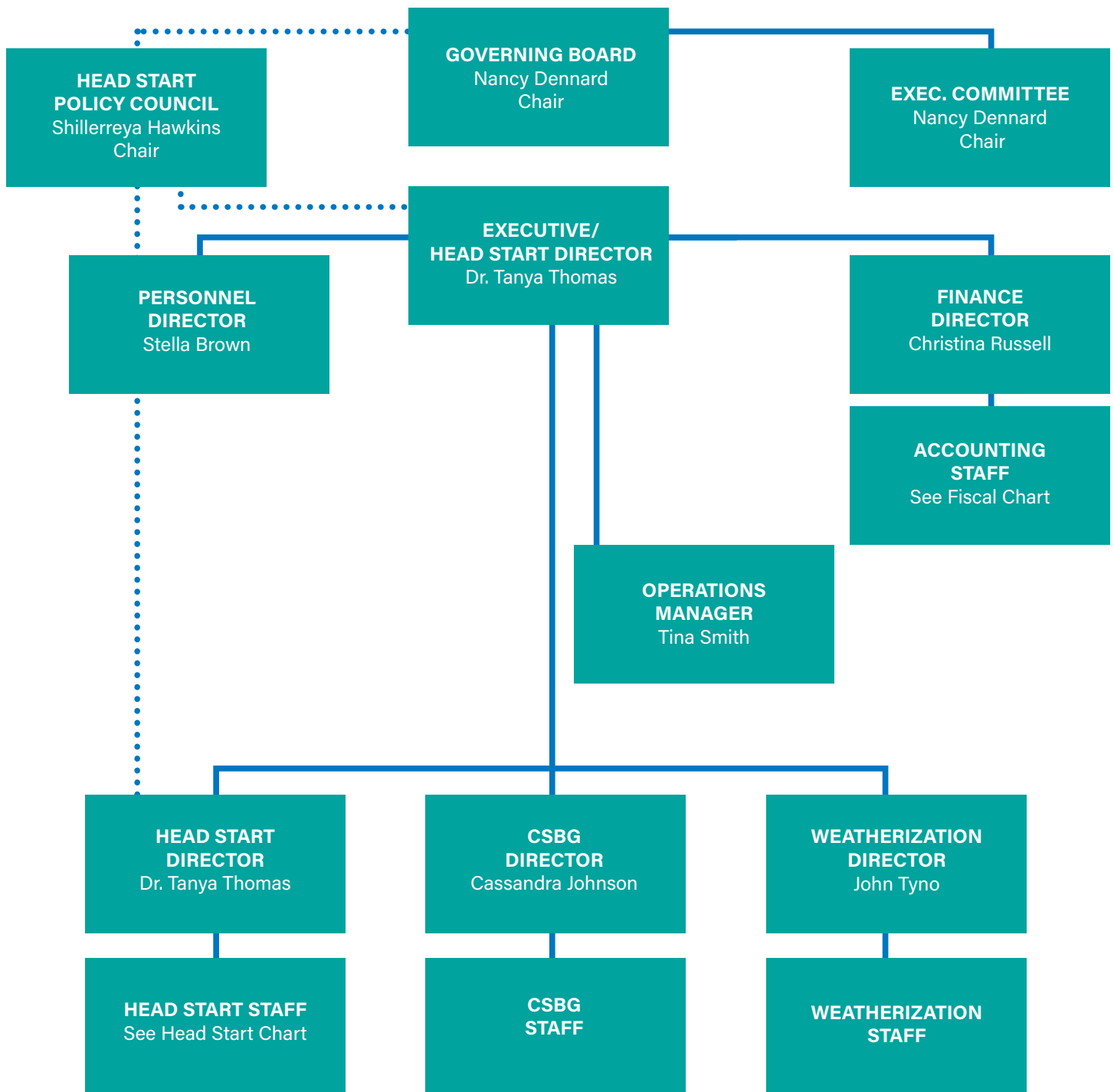
TURNER

BEN HILL

IRWIN



COASTAL PLAIN AREA ECONOMIC OPPORTUNITY AUTHORITY, INC. ORGANIZATIONAL CHART



This Agency chart defines the reporting relationships within CPAEOA. Solid lines indicate direct reporting relationships. Dotted lines indicate indirect reporting relationships. The Head Start Policy Council represents an approval/disapproval relationship regarding specific decisions made within the Agency.

MESSAGE FROM THE BOARD CHAIRMAN



NANCY DENNARD
Board Chairman

More than 50 years ago President Lyndon Johnson said, “We must open the doors of opportunity. But we must equip our people to walk through those doors. With that he declared a War on Poverty and supported the Economic Opportunity Act, which led to the creation of the Coastal Plain Area Economic Opportunity, Inc.

Since then, CPAEOA has helped thousands of people with range of services, from early childhood, community services, to weatherizing homes. Each year we serve ... and while we provide a wide range of economic supports, our goal is to create opportunities for people to achieve self-sufficiency and release themselves from poverty. CPAEOA’s goal is to help low-income people and families overcome challenges and improve their economic standing in their lifetimes.

It is my privilege as the Board of Directors Chair to work with an amazing staff and dedicated board of directors. We are deeply committed to the CPAEOA mission, and we work each day with a renewed dedication.

On behalf of the CPAEOA Board of Directors, we thank you for your support.

Sincerely,

Mayor Nancy Whitfield Dennard

MESSAGE FROM THE EXECUTIVE/HEAD START DIRECTOR



DR. TANYA THOMAS
Executive/Head Start Director

Coastal Plain Area Economic Opportunity Authority, Inc. has been a part of helping the 10 county Coastal Plain Area for over 50 years. We have invested more than \$250 Million Dollars into the communities that our employees, clients, and families live, work, and serve.

Coastal Plain Area EOA, Inc., has always strived to achieve our mission statement “People Helping People to Achieve Self Sufficiency.” However in this world of change, we too are changing, not only are we helping people to achieve self –sufficiency, we are changing our communities by empowering people and enriching families and communities.

I have served Coastal Plain Area EOA for over 15 years. I began my experience with Coastal Plain Area EOA fourteen years ago as the Education Coordinator and then later the Head Start Director. Now presently I am proud to serve as the Executive Director for the Agency. I am proud to be a part of the positive changes being emulated throughout our agency. As you read our Annual Report, you will see the positive changes that are not only taking place within our agency, but those that we have put into motion throughout our 10 years.

We are thankful for everyone who has helped in making Coastal Plain Area EOA, Inc. The Board of Directors, for encouraging us to move forward into the future. Our Directors, who have done outstanding with their program, training employees and making a difference within our agency. The employees that are there every day with a smile on their face, helping students and clients, showing everyone that Coastal Plain Area EOA. Incorporated is your local community action agency.

It is my honor as Executive Director to present to you our 2019 Coastal Plain Area Economic Opportunity Authority Incorporated Annual Report.

Tanya Thomas

Executive/Head Start Director

2020-2021 BOARD OF DIRECTORS

CATHY DANIELS

Member
Hahira County

JEANNIE LITTLE

Member at Large
Brooks County

PEARLENE DANIELS

Member
Berrien County

JAMES MAXWELL

Member
Brooks County

GAIL JONES-WINSTON

Member
Lowndes County

TERRELL HALIBURTON

Member
Tift County

DR. NANCY DENNARD

Chair
Brooks County

MORRIS ALEXANDER

Member
Tift County

ISRAEL CORTEZ

Member
Echols County

JOHN GEE EDWARDS

Member at Large Attorney Rep.
Lowndes County

ARLINDA MURREL

Member
Irwin County

SHIRLEY P. ANDREWS

Vice Chair
Lowndes County

ERIC HOWARD

Parliamentarian
Lowndes County

TRAVIS JOHNSON

Member
Irwin County

MICHAEL ACREE

Member
Ben Hill County



2020-2021 LEADERSHIP TEAM



Dr. Tanya Thomas
*Executive/Head Start
Director*



Tocsha Brown
Human Resource Director



Christina Russell
Finance Director



John Tyno
Weatherization Director



Joseph Matchett
Transportation Manager



Faye Walker
Program Budget Analyst



Tina Smith
Operations Manager



Tracy Ragan
Health/Nutrition Manager



Kristie Pizzino
ERSEA Manager



Stephney Davis
*Disability/Mental
Health Manager*



Pamela Mitchel
*Family & Community
Engagement Manager*



COASTAL PLAIN AREA
ECONOMIC OPPORTUNITY AUTHORITY

COMMUNITY SERVICE CENTERS

BEN HILL COUNTY

223 S Grant St.
Fitzgerald, GA 31750
229-426-5177

BERRIEN COUNTY

402 Hazel Ave.
Nashville, GA 31309
229-686-7871

BROOKS COUNTY

400 Courtland Ave.
Quitman, GA 31643
229-263-7818

IRWIN COUNTY

517 Fourth St.
Ocilla, GA 31774
229-468-5186

LANIER COUNTY

108 S. Hwy 135
Lakeland, GA 31635
229-482-3435

LOWNDES COUNTY

900 S. Troupe St.
Valdosta, GA 31601
229-242-8814

ECHOLS COUNTY

170 Church of God St.
Statenville, GA 31648
229-559-3472

TURNER COUNTY

124 E. College St.
Ashburn, GA 31714
229-567-2844

COOK COUNTY

303 S. College St.
Sparks, GA 31647
229-549-8780

TIFT COUNTY

2737 S. Central Ave., Suite 4
Tifton, GA 31794
229-382-2960

COMMUNITY SERVICE BLOCK GRANT



All direct services, other than Head Start services, are provided through a network of ten Community Service Centers (CSC). CSCs are located in each of the ten counties within the Agency's primary service area. Each CSC is an active part of the local community, and provides a variety of community services for individuals of all ages.

A major strength of the CSCs is that no two are alike. Each one provides its own array of services to meet the specific needs that are unique to each county in the service area. With primary funding through the Community Services Block Grant (CSBG), services range from job-skills training to management counseling and crisis intervention.

Advocacy: A priority for all CSCs is to provide advocacy. The CSCs serve as advocates on local public health issues such as affordable housing, utility rates, and health care. Assistance is also provided to low-income residents who are not Medicare-eligible, to help them to apply for discount prescription medication and prescription eyeglass programs.

Without the ability of the CSCs to provide these very important components, many of those who need assistance would not be able to get the help which they need. The advocates are crucial to the success of the Community Service Centers. We are the "Helping Hands."

MINOR CAR REPAIR ASSISTANCE

This program was put in place to help assist those individuals who are currently employed but experience problems with their vehicle and are unable to get to and from work causing issues with their employer. In order to maintain employment and reliable transportation, clients were able to receive assistance with their car repairs. Clients must have been employed for 6 months or more and provide a verification of employment. Examples of Minor Car Repair include, but are not limited to, battery replacement, belts, seatbelts, lights, thermostats, wiper blades, etc. The clients that were approved for this program received a minimum of \$300.00 upwards to a maximum of \$550.00 towards their car repairs and was paid directly to the vendor that provided the repair services.

CSBG

11 individuals served
for a total amount of

\$5,075

CSBG CARES

25 individuals served
for a total amount of

\$9,961

PRESCRIPTION DRUG ASSISTANCE

The Prescription Drug Assistance Program assured that those who had medical issues and needed medication but could not afford to pay for it were able to have their needs met. Families who have limited resources sometimes must make a decision whether to buy food, pay rent or utilities, or buy their medications.

This benefit allowed families to use their household resources on other necessities such as those listed earlier. The CSCs in all service areas work closely with local pharmacies and utilize other resources, such as discount programs, which are offered by pharmacies such as Chancy Drugs, Wal-Mart, Tifton Drugs, R&M Cash Drugs, Moon's Pharmacy, U Save It Pharmacy Adel, Lakeland Drug Company, and more.

CSBG

1 individual served
for a total amount of

\$150

CSBG CARES

1 individual served
for a total amount of

\$62

PRESCRIPTION EYEGLASS ASSISTANCE

Through an exclusive MOU / Contract with America's Best Contacts & Eyeglasses in Valdosta Georgia, CSBG's Prescription Eyeglass Assistance Program provides individuals with eye exams and quality prescription eyeglasses. This partnership allowed each client to receive up to \$500.00 towards the eye exam, prescription lens' and fashionable frames. This benefit assured that those who had untreated vision needs, and without insurance, were able to have their needs met.

CSBG

8 individuals served
for a total amount of

\$3,816

CSBG CARES

43 individuals served
for a total amount of

\$20,664

CSBG / CSBG CARES ASSISTANCE

CSBG

Served 204 clients

Total amount of
\$183,129

CSBG CARES

Served 244 clients

Total amount of
\$227,465

RENTAL ASSISTANCE

The Rental/Mortgage Assistance Program provides emergency assistance to avoid eviction or homelessness.

ENERGY ASSISTANCE

The Energy Assistance Program assists eligible low-income households with their heating and cooling energy costs, bill payment assistance, energy crisis assistance, weatherization, and energy-related home repairs.

CSBG

Served 6 clients

Total amount of
\$2,607

CSBG CARES

Served 54 clients

Total amount of
\$19,800

CSBG CARES

Served 2 clients

Total amount of
\$12,388

MINOR HOME REPAIR

Individuals who are 62 and older or who are disabled will receive assistance with minor home repairs such as handicap toilets, handrails, handicap ramps, leaky bathroom and kitchen faucets, repairs of bathroom and kitchen floors, etc.

FOOD VOUCHERS

Food vouchers are issued to individuals who need emergency food, due to hardship such as loss of employment due to no fault of their own, cut in work hours or wages, receive no food stamps or maximum of \$50 in food stamps. The value of food vouchers starts at \$200 each.

CSBG

Served 120 families

Total amount of
\$29,000

CSBG CARES

Served 511 clients

Total amount of
\$102,200

COMMUNITY SERVICES BLOCK GRANT EMERGENCY ASSISTANCE

CSBG

ADMINISTRATIVE

\$156,786

PROGRAM

\$586,473

TOTAL

\$743,259

CSBG CARES

ADMINISTRATIVE

\$86,361

PROGRAM

\$750,572

TOTAL

\$836,933

LOW-INCOME HOME HEATING ENERGY ASSISTANCE PROGRAM

With funding from the Department of Human Resources, the Low-Income Energy Assistance Program (LIHEAP) is able to assist low income families in offsetting the increased costs of energy for home heating during the winter months. Priority is given to households comprised of those who are 65 years or older, those who are home bound, and other disabled clients. Funding is also set aside for those with life-threatening medical conditions. Although this service is for energy costs during the winter months, in some cases, the Federal Government will release funds to assist the elderly and those who are homebound with cooling assistance.

SOME OF THE BENEFITS FROM THIS ENERGY PROGRAM ARE AS FOLLOWS:

- Reduces the incidents of health problems attributable to winter cold.
- Enables the elderly and those with life-threatening medical conditions to maintain independence while maintaining a state of well-being.
- Helps to keep fuel costs from rising by reducing billing write-offs for energy suppliers.
- Circumvents energy cut-offs for homebound, elderly, and other low-income households.
- Stimulates the local economy through funds put into circulation for the payment of energy bills.

Funds are made available during the winter months to help individuals who are out of options and who are therefore in a crisis situation. These individuals may be about to have their utility or heating services disconnected, may have run out of heating fuel, or are faced with extreme winter temperatures, or have some other emergency.

The LIHEAP services were provided to more than 9,841 households, each receiving a minimum of \$350. The total amount expended from October 1, 2020 through September 30, 2021 for the Program was \$4,391,819.

APPLICATION TYPE	HOUSEHOLDS SERVED	BENEFIT AMOUNTS
Regular LIHEAP Heating and Cooling Applications	6015	\$2,406,042
H.E.A.T. Inc. Benefits	62	\$24,789
Total Administrative Costs	—	\$197,630
Total Program Support	—	\$126,634
LIHEAP Cares Applications	3764	\$1,505,668
Total LIHEAP Cares Administrative Costs	—	\$131,056
TOTAL	9841	\$4,391,819

WEATHERIZATION PROGRAM

Coastal Plain Area E.O.A., Inc. Weatherization Program provides energy conservation, and health and safety measures to low-income families in its 10-county area. The program is funded through the Department of Energy and Department of Health and Human Services. The program helps lower the energy burden on the household and provide a healthier and safer living environment for its occupants.



The Weatherization Program has certified BPI Energy Auditors and Quality Control Inspectors to use advanced diagnostic equipment to measure air infiltration, pressure imbalances, lead safe practices, ductwork leakages, and heating and cooling operations within the home. Combustion safety testing is done on homes with natural or propane gas when it is the fuel source for the appliances in the home. Air quality testing through ASHRAE ensures that the home is getting enough fresh air turn over per hour as needed through air quality standards. All these test help insure the home is safe and is a healthy environment for its occupants.

Lowering homes energy consumption benefits all of us by keeping our energy rates lower and enabling the energy source to allow more clients on the present grid system. We educate the clients on the need to conserve and therefore they save on their energy bill which allows them to have more disposable income to use on other household or personal needs. Weatherization Works!

COUNTY	PROGRAM OPERATIONS	AVERAGE COST	TOTAL UNITS	TOTAL OCCUPANTS
Ben Hill	\$106,779	\$11,864	9	11
Brooks	\$11,495	\$11,495	1	2
Cook	\$13,232	\$13,232	1	1
Echols	\$7,727	\$7,727	1	1
Lanier	\$60,947	\$12,189	5	14
Lowndes	\$63,589	\$10,600	6	9
Tift	\$88,763	\$12,680	7	7
Turner	\$83,528	\$13,921	6	10
TOTAL	\$436,070	\$12,113	36	55

HEAD START

Head Start is a comprehensive early childhood development program for economically disadvantaged preschool children and their families.

THE OBJECTIVES OF THIS PROGRAM ARE:

1. To improve the child's health
2. Aid the child's intellectual, social, and emotional development
3. Improve and expand the child's ability for self expression
4. Help both the enrollees and their families gain greater confidence, self-respect, and dignity. Eligibility guidelines require that enrollees, including children with disabilities, are between three years of age and compulsory school attendance, and at least ninety percent are from low-income families.



AT LEAST
90%
ARE FROM
LOW-INCOME
FAMILIES

HEAD START LOCATIONS



NASHVILLE HEAD START ★ ★

204-A Hazel Ave.
Nashville, GA 31639
(229) 686-3085
(229) 686-2030 Fax
Nashville@cpheadstart.org

BEN HILL HEAD START ★ ★ ★

410 E. Altamaha St.
Fitzgerald, GA 31750
(229) 423-3191
(229) 423-1021 Fax
benhill@cpheadstart.org

COOK HEAD START ★ ★

504 W. First St.
Adel, GA 31620
(229) 896-7322
(229) 896-4275 Fax
cook@cpheadstart.org

LOWNDES 1 HEAD START ★ ★

1613 Ulmer Ave.
Valdosta, GA 31601
(229) 244-6300
(229) 244-8706 Fax
lowndes1@cpheadstart.org

HALLMARK HEIGHTS HEAD START ★ ★

605 Hightower St.
Valdosta, GA 31601
(229) 244-7773
(229) 244-7850 Fax
hallmark@cpheadstart.org

BROOKS HEAD START ★ ★

1301 N. Martin Luther King Dr.
Quitman, GA 31643
(229) 263-5662
(229) 263-5633 Fax
brooks@cpheadstart.org

IRWIN HEAD START ★ ★

517 Fourth St.
Ocilla, GA 31774
(229) 468-5712
(229) 468-7907 Fax
irwin@cpheadstart.org

HAHIRA HEAD START ★ ★

403 Main St.
Hahira, GA 31632
(229) 794-3310
(229) 794-3323 Fax
hahira@cpheadstart.org

LANIER HEAD START ★ ★ ★

104 South Oak St.
Lakeland, GA 31635
(229) 482-3467
(229) 482-3175 Fax
lanier@cpheadstart.org

BW LESTER HEAD START ★ ★ ★

2522 Copeland Rd.
Valdosta, GA 31601
(229) 247-9750
(229) 247-9751 Fax
bwlester@cpheadstart.org

R L MACK HEAD START ★ ★

64 Tifton Eldorado
Tifton, GA 31794
(229) 382-5110
(229) 387-6770 Fax
tift@cpheadstart.org

TURNER COUNTY HEAD

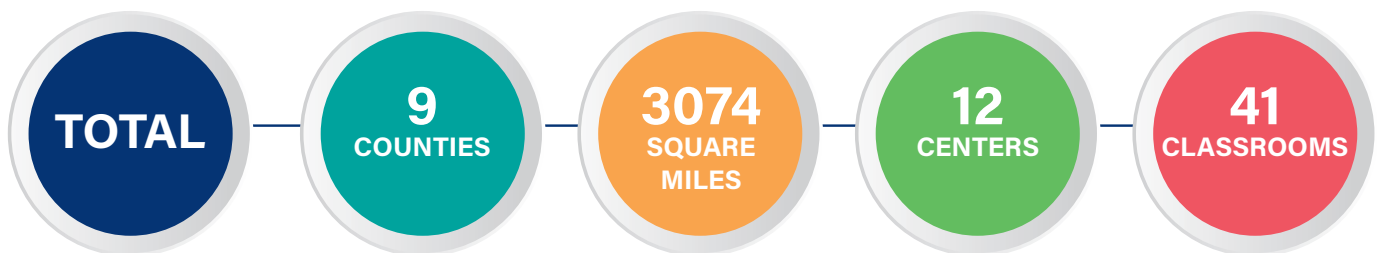
524 Martin Luther King Dr.
Ashburn, GA 31714
(229) 567-9233
(229) 567-0876 Fax
turner@cpheadstart.org



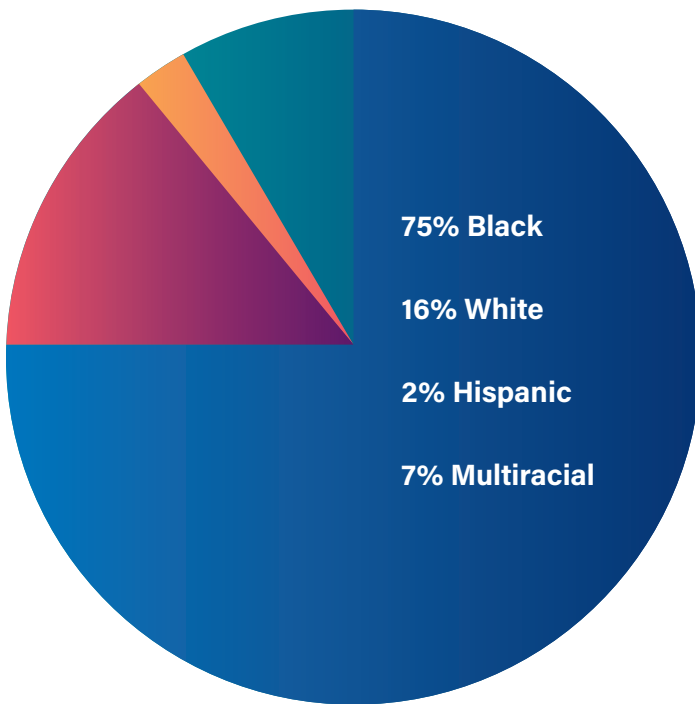
Quality Rated Child Care of Georgia is a resource for parents and families to help them find high-quality child care, preschool, and Pre-K programs. Quality Rated has an online tool that helps families find child care in their area that have been evaluated by credentialed early childhood experts and deemed high-quality. Quality Rated assigns one, two or three stars, with three being the highest, to early education care programs that meet or exceed the minimum state requirements. Stars beside the center name signifies rating of each site.

HEAD START SERVICE AREA

COUNTY	SQUARE MILES	CENTERS	CLASSROOMS
Ben Hill	254	Fitzgerald	5
Turner	290	Ashburn	2
Irwin	363	Ocilla	2
Tift	269	Tifton	7
Berrien	458	Nashville	2
Cook	233	Adel	4
Lanier	199	Lakeland	2
Brooks	498	Quitman	3
Lowndes	510	B.W. Lester	4
Lowndes	510	Hahira	2
Lowndes	510	Hallmark Heights	5
Lowndes	510	Lowndes 1	10



HEAD START POPULATION CHARACTERISTICS



The racial composition of the total children in Head Start served this year is Black 75%, White 16%, Hispanic 2%, and Multiracial 7%. Our current funded enrollment is 811. Materials are printed by Head Start in Spanish to accommodate the families. The rural farming area in South Georgia has attracted more each year.

RACE AND ETHNICITY	# OF CHILDREN OF HISPANIC OR LATINO ORIGIN	# OF CHILDREN OF NON-HISPANIC OR LATINO ORIGIN
American Indian or Alaska Native	1	0
Asian	0	1
Black or African American	4	440
Native Hawaiian or other Pacific Islander	0	0
White	12	83
Biracial/Multi-racial	6	36
Other - Hispanic, Arabic, and Haitian	11	0

HEAD START PROGRAM INFORMATION 2020-2021

			PARENTAL STATUS	
	CENTERS	CHILDREN RIDING BUS	TWO PARENTS	ONE PARENT
	B.W. Lester	16	9	27
	Ben Hill	10	17	68
	Brooks	1	7	22
	Cook	0	5	26
	Hahira	0	6	17
	Hallmark	0	11	56
	Irwin	0	4	22
	Lanier	0	6	24
	Lowndes-1	33	14	88
	Nashville	2	5	16
	Tifton	13	11	65
	Turner	75	2	22
TOTAL			97	453

ChildPlus.net PIR 2020-2021

TOTAL NUMBER OF FAMILIES SERVED

550

HEAD START 2020-2021 PROGRAM ENROLLMENT INFORMATION

COUNTIES	INCOME ELIGIBLE	HOMELESS	FOSTER	TANF	SSI	HEAD START'S AVERAGE MONTHLY ENROLLMENT WAS 77.58%
Berrien	12	0	1	1	2	
Ben Hill	84	1	2	0	3	
Brooks	27	0	1	1	0	
Cook	29	0	0	1	2	AGES 3 YEARS OLD SERVED 407
Irwin	20	0	3	0	2	
Lanier	23	0	0	1	2	
Lowndes	205	1	1	1	23	
Tifton	107	1	3	0	4	AGES 4 YEARS OLD SERVED 187
Turner	21	0	2	0	1	
TOTAL	488	3	13	5	39	



FUNDED ENROLLMENT: **811**

ACTUAL ENROLLMENT: **594**

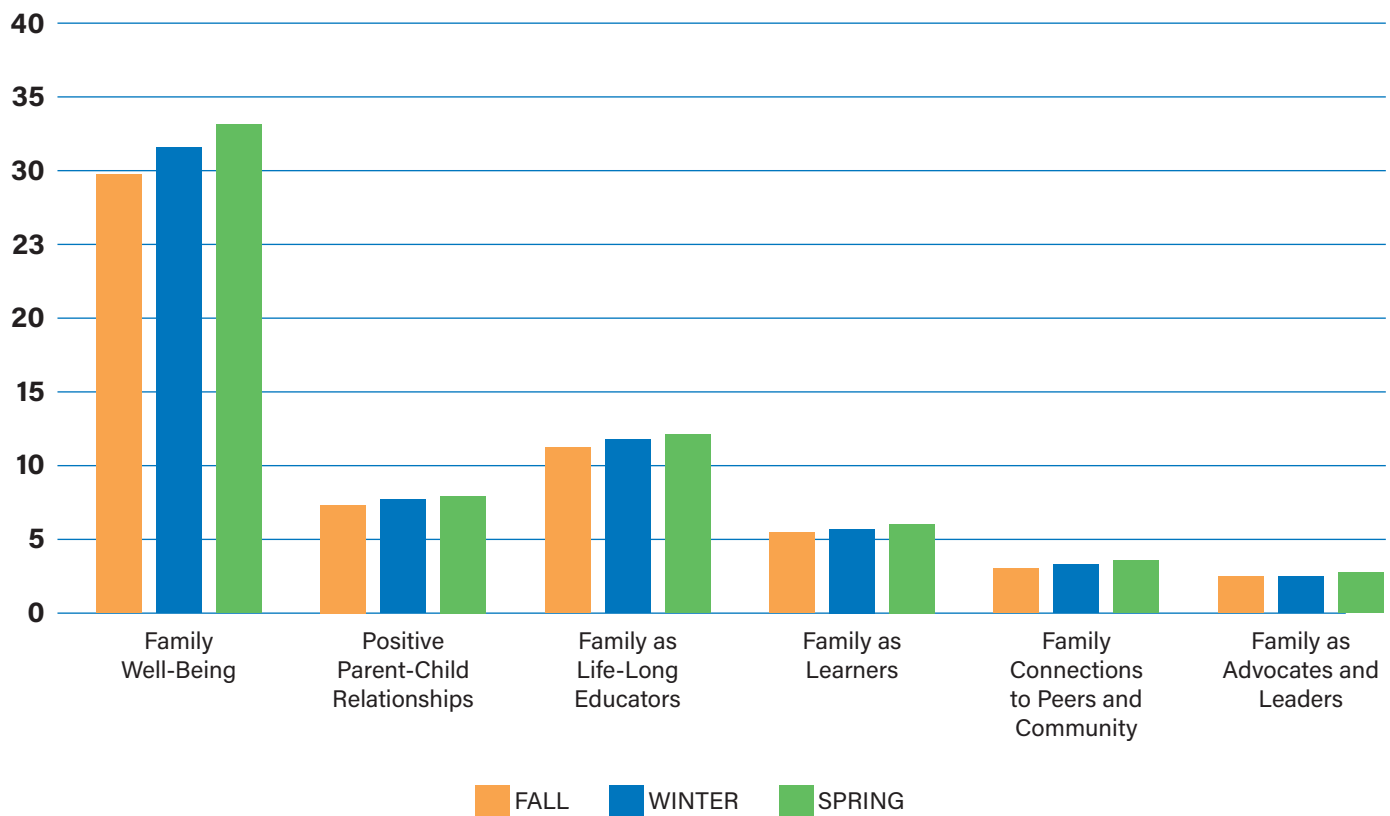
ChildPlus.net PIR 2020-2021

HEAD START FAMILY ENGAGEMENT OUTCOMES

The family outcomes assessment report shows the results for fall winter, and spring 2020-2021 school year. The chart shows that Head Start families made gains in all areas, though in some cases the increase was slight. The results show that Head Start families did well despite the pandemic. Some outcomes were low due to agency shutdowns, and the parents not being able, or not feeling comfortable, to attend different events once businesses started opening again.

The family health advocates were still able to provide services to the families via in person meetings, virtual meetings, and over the telephone. Parents were sent home information if they were not able to attend the virtual parent meeting/training. The family health advocates worked continuously to make sure that the families needs were still being met. We want to make sure that we are providing services and giving the parents resources that they need to help them thrive or at least become stable in their family outcomes.

HEAD START FAMILY ENGAGEMENT OUTCOMES FALL / WINTER / SPRING 2020-2021



2020-2021 HEALTH INSURANCE INFORMATION

COUNTY	MEDICAIDE	PRIVATE INSURANCE
Berrien	15	2
Ben Hill	86	4
Brooks	31	0
BW Lester	40	0
Cook	31	0
Hahira	24	3
Hallmark Heights	68	3
Irwin	26	2
Lanier	27	4
Lowndes 1	109	3
Tifton	79	2
Turner	24	0
TOTALS	560	24

COMPLETED PREVENTIVE CARE

DENTAL EXAMS **100%**

MEDICAL EXAMS **84.5%**

IMMUNIZATIONS **100%**

TRAUMA-INFORMED APPROACH

Our Head Start program plays a critical role in buffering the impact of trauma by promoting resilience for children, families, and staff. The effects of trauma are lessened by protective factors such as strong parent-child relationships; relationships between staff, children, and families in Head Start programs; and through relationships and supports within the community. Supporting staff wellness is a critical part of any trauma-informed approach in Head Start programs.

Trauma occurs when frightening events or situations overwhelm a child or adult's ability to cope or deal with what has happened. These kinds of experiences cause an extended stress response and lasting effects on the physical and mental health of children and families. Traumatic events can be a single event (e.g., a terrible accident) or chronic (e.g., domestic violence), and there are many factors that affect the intensity of a person's response. Exposure to trauma is more common than most people believe. It is also multi-layered, with individual, community, and historical experiences. That said, not everyone exposed to adverse experiences is traumatized.

Our program is designed to implement a comprehensive, ongoing trauma-informed approach that provides all staff activities to implement the 4 R's as one that:

THE FOUR R's OF TRAUMA-INFORMED CARE



REALIZE

REALIZE the widespread impact of trauma and understand potential paths for recovery.

RECOGNIZE

RECOGNIZE the signs and symptoms of trauma in clients, families, staff, and others involved with the system.

RESPOND

RESPOND by fully integrating knowledge about trauma into policies, procedures, and practices.

RESIST

RESIST re-traumatization of children, as well as adults who care for them.

This figure is adapted from: Substance Abuse and Mental Health Services Administration (2014). SAMHA's concept of trauma and Guidance for a trauma-informed approach. HHS publication no. (SMA) 14-4884, Rockville, MD; Substance Abuse and Mental Health Services Administration.

RESULTS FROM DISABILITY SERVICES 2020-2021

Preschool Disability Services

DIAGNOSED PRIMARY DISABILITIES	DETERMINED DISABILITY	RECEIVING SERVICES
a. Health impairment (meeting IDEA definition of "other health impairments")	25	25
b. Emotional/behavioral disorder	0	0
c. Speech or language impairments	49	49
d. Intellectual disabilities	0	0
e. Hearing impairments, including deafness	0	0
f. Orthopedic impairment	0	0
g. Visual impairment, including blindness	0	0
h. Learning disabilities	1	1
i. Autism	0	0
j. Traumatic brain injury	0	0
k. Non-categorical/development delay	21	21
l. Multiple disabilities	0	0
m. Deaf-blind	0	0

RESULTS FROM MENTAL HEALTH SERVICES 2020-2021

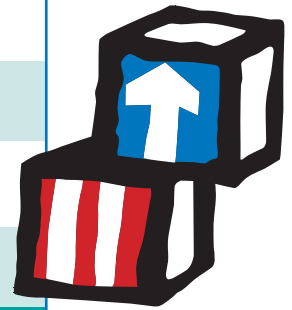


Therapy Center Valdosta's mission is to provide services to the residents of Lowndes County and surrounding counties with evidence-based behavioral health services that are based on the unique situation of each individual's physical, emotional, and cognitive function. As a community partner, they have dedicated themselves to sustain and strengthen the well-being of individuals and families in the area to promote a healthier society.

Therapy Center Valdosta provides therapeutic counseling to patients of all ages coping with a variety of mental health issues. They provide face-to-face, tele-counseling, and phone service counseling in order to service individuals and families with issues related to depression, anxiety, marital issues, post-traumatic stress, work issues, anger management, stress management, and daily life stressors. Alcohol and drug abuse treatment is available for patients and their families through individual therapy, group therapy, and/or family therapy. Therapy Center Valdosta utilizes prevention, education, intervention, and/or continuing help based on the needs of the patient.

HEAD START PUBLIC AND PRIVATE FUNDS RECEIVED

Head Start and HS T/TA	\$7,240,281
Non-Federal match	\$1,724,635
Child and Adult Care Food Program	\$415,016
HS COVID-19	\$712,713
TOTAL FUNDS RECEIVED	\$10,092,644



BUDGETARY EXPENDITURES AND PROPOSED BUDGET FOR THE FISCAL YEAR

	HEAD START OPERATING	HS T/TA	HS NON-FEDERAL MATCH
Salaries	\$3,758,177	-	-
Fringe Benefits	\$1,238,341	-	-
Travel	\$5,467	-	-
Equipment	-	-	-
Supplies	\$328,855	-	-
Contractual	\$74,293		
Construction	-	-	\$1,724,635
Other	\$1,750,165	\$84,984	\$1,724,635
SUB TOTAL	7,155,297	\$84,984	\$7,240,281
OVERALL TOTAL	\$7,181,865	\$84,984	\$8,964,916

Hudson & NeSmith, CPAs

Member

American Institute of Certified Public Accountants

Georgia Society of Certified Public Accountants

Private Companies Practice Section

INDEPENDENT AUDITOR'S REPORT

REPORT ON THE FINANCIAL STATEMENTS

We have audited the accompanying financial statements of Coastal Plain Area Economic Opportunity Authority, Inc. (a non-profit organization), which comprise the statement of financial position as of March 31, 2021, and the related statements activities, functional expenses, and cash flows for the year then ended, and the related notes to the financial statements.

OPINION

In our opinion, the financial statements referred to above present fairly, in all material respects, the financial position of Coastal Plain Area Economic Opportunity Authority, Inc., as of March 31, 2021, and the changes in its net assets and its cash flows for the year then ended in accordance with accounting principles generally accepted in the United States of America.

INDEPENDENT AUDITOR'S REPORT ON COMPLIANCE FOR EACH MAJOR PROGRAM AND ON INTERNAL CONTROL OVER COMPLIANCE REQUIRED BY THE UNIFORM GUIDANCE

OTHER REPORTING REQUIRED BY GOVERNMENT AUDITING STANDARDS

In accordance with Government Auditing Standards, we have also issued our report dated November 30, 2021, on our consideration of Coastal Plain Area Economic Opportunity Authority, Inc.'s internal control over financial reporting and on our tests of its compliance with certain provisions of laws, regulations, contracts, and grant agreements and other matters. The purpose of that report is solely to describe the scope of our testing of internal control over financial reporting and compliance and the results of that testing, and not to provide an opinion on the effectiveness of Coastal Plain Area Economic Opportunity Authority, Inc.'s internal control over financial reporting or on compliance. That report is an integral part of an audit performed in accordance with Government Auditing Standards in considering Coastal Plain Area Economic Opportunity Authority, Inc.'s internal control over financial reporting and compliance.

SCHEDULE OF PROGRAM REVENUE

COASTAL PLAIN AREA ECONOMIC OPPORTUNITY AUTHORITY, INC. SCHEDULE OF PROGRAM REVENUE FOR YEAR ENDED MARCH 31, 2021

PROGRAM AND CONTRACT NO.	FEDERAL AND STATE	PROGRAM AND OTHER	GRANTEE INKIND	TOTAL
CSBG (CARES Act)	\$517,273	-	-	\$517,273
CSBG - FY 21-22	\$184,146	-	-	\$184,146
CSBG - FY 20-21	\$440,082	-	-	\$440,082
WX-DOE 20-21	\$201,063	-	-	\$201,063
WX-HHS 20-21	\$215,565	-	-	\$215,565
WX-HHS (CARES Act)	\$115,720	-	-	\$115,720
Head Start PA20 2021	\$7,155,297	-	\$1,724,635	\$8,879,932
Head Start (CARES Act)	\$712,713	-	-	\$712,713
Head Start PA20 2021	\$84,984	-	-	\$84,984
CACFP - Head Start 10/21-09/21 0421	\$242,856	-	-	\$242,856
CACFP - Head Start 10/19-9/20 0421	\$36,199	-	-	\$36,199
LIHEAP 20/21	\$1,565,515	-	-	\$1,565,515
LIHEAP (CARES Act)	\$1,636,724	-	-	\$1,636,724
LIHEAP 19/20	\$983,557	-	-	\$983,557
Pre-K 19/20	\$57,745	-	-	\$57,745
TOTAL	\$14,149,439	-	\$1,724,635	\$15,874,074

CLASSROOM ASSESSMENT SCORING SYSTEM (CLASS)

MOST RECENT REVIEW - RESULTS FROM CLASS OBSERVATIONS

CLASS reviews were conducted between 4/25/21 - 5/18/21.

Observations were conducted in preschool center-based classrooms using the Pre-K Classroom Assessment Scoring System (CLASS). The CLASS tool looks at three domains and ten dimensions of teacher-child interactions and measures those observed interactions on a seven-point scale.

DOMAIN	SCORE
Emotional Support	6.21
Classroom Organization	5.5
Instructional Support	3.29

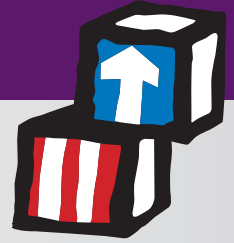
**Note: To calculate the Emotional Support domain, subtract the Negative climate score from eight, add the Positive Climate, Teacher Sensitivity, and Regard for Student Perspective scores, then divide by four.*

DIMENSIONS			
Positive Climate	6.21	Behavior Management	5.83
Concept Development	3.45	Negative Climate*	1.08
Productivity	5.59	Quality Feedback	3.27
Teacher Sensitivity	5.83	Instructional Learning Format	5.09
Language Modeling	3.17	Regard for Student Perspectives	5.86

OHS CLASS® DESCRIPTIVE STATISTICS, 2020 NATIONAL GRANTEE-LEVEL SCORES BY DIMENSION

DOMAIN	DIMENSION	MEAN	STANDARD DEVIATION	MIN.	MAX.
EMOTIONAL SUPPORT	Positive Climate	5.98	.28	5.17	6.61
	Negative Climate	1.09	0.08	1.00	1.50
	Teacher Sensitivity	5.88	.30	5.06	6.63
	Regard for Student Perspectives	5.33	0.38	5.29	6.75
CLASSROOM ORGANIZATION	Behavior Management	5.96	0.33	5.29	6.75
	Productivity	5.32	0.35	5.00	6.81
	Instructional Learning Formats	2.46	0.41	1.76	3.46
INSTRUCTIONAL SUPPORT	Concept Development	2.46	.041	1.76	3.26
	Quality Feedback	2.90	0.40	2.08	3.88
	Language Modeling	3.45	.048	2.22	4.50

EFFORTS TO PREPARE CHILDREN FOR KINDERGARTEN



Our Head Start program strives to ensure each child is prepared for their next educational experience. Creative Curriculum is used as our developmental guide for classroom activities. Each child is assessed using the Brigance Assessment tool. This tool evaluates children's early development and kindergarten readiness and assist teachers with identifying potential delays or giftedness, supporting referrals for services, and planning individualized instruction. In addition to Brigance, we use the Teaching Strategies Gold (TSG) assessment that aligns with Creative Curriculum. TSG is an ongoing, teacher observation based tool that ensures the success of the students. Our school readiness goals are listed below.

They are aligned with the state and local school systems goals and expectations.

DOMAIN	READINESS GOALS 2020-2021
Language and Literacy	<ol style="list-style-type: none"> 1. Children will comprehend an increasingly complex and varied vocabulary. 2. Children will increase their use of language to communicate with adults and peers.(Children who are dual language learners will demonstrate proficiency in their home language while acquiring beginning proficiency in English.) 3. Children will use and understand print as meaningful and organized symbolic system of communication. 4. Children will identify names and sounds associated with letters and have an awareness that language can be broken down into words and syllables.
Cognition and General Knowledge	<ol style="list-style-type: none"> 5. Children will use scientific skills and methodology to gain a better understanding of information and activities in their surroundings. 6. Children will increase their skills in remembering information and in being aware of their own thinking. 7. Children will use math regularly and in everyday routines to count, compare, relate, identify patterns, and problem solve.
Approaches to Learning	<ol style="list-style-type: none"> 8. Children will show an interest in varied topics and activities, an eagerness to learn, creativity, and independence in their interactions with activities and materials. 9. Children will demonstrate persistence and sustained attention when working with materials, activities and information.
Physical Development and Health	<ol style="list-style-type: none"> 10. Children will maintain healthy and age appropriate physical well-being. 11. Children will develop safe and healthy habits. 12. Children will increase control of their small and large muscles.
Social and Emotional Development	<ol style="list-style-type: none"> 13. Children will engage in positive peer relationships and interactions with familiar adults and peers. 14. Children will learn to internalize (follow) classroom rules, routines, and directions.

MEN 4 MEN

Designed for fathers who wish to learn more about responsible fatherhood skills, traits and practices to support their families.

WHAT WE OFFER

- Family Engagement Training
- Fatherhood Mentoring and Training
- GED Enrollment
- GED Preparedness
- Job Search/Placement
- Job Training
- One-on-one Counseling/Group Counseling
- Peer Group Session
- Professional Development Training
- Trauma/Health Counseling
- Volunteer Work Opportunity



WOMEN 2 WOMEN

This is a group designed for women to have a safe, reliable support system and allows women to discuss topics of their interest.

WHAT WE OFFER

- Peer Group Session
- Motivational Speaker
- One-on-one Counseling/Group Counseling
- Group Wellness Activities
- Events Designed to Empower Women



We would like to thank all of our Community Partners
that collaborate with our agency to provide services
for families and children.



COASTAL PLAIN AREA
ECONOMIC OPPORTUNITY AUTHORITY

Follow us and keep updated with events,
job listings, and more.



www.coastalplain.org



@CPAEOA



Coastalplainvaldosta

Coastal Plain Area E.O.A., Inc.
1810 West Hill Avenue, Unit A6
Valdosta, GA 31601

www.coastalplain.org

229-244-7860
229-245-7885 (fax)



COASTAL PLAIN AREA
ECONOMIC OPPORTUNITY AUTHORITY

Coastal Plain Area E.O.A., Inc.
1810 West Hill Avenue, Unit A6
Valdosta, GA 31601

229-244-7860
229-245-7885 (fax)

www.coastalplain.org



*Empowering families
to move toward sustaining
self-sufficiency.*

