

# Coastal Plain Area Economic Opportunity Authority, Inc.



## 2018-2019 Annual Report

# Table of Contents

## Contents

### HEAD START Table of Contents

History-----	2
Service Area-----	2
Organizational Chart-----	3
Message from the Board Chairman-----	4
Board of Directors-----	5
Message from the Executive/Head Start Director-----	6
Community Service Block Grant Program (CSBG) -----	7
Minor Home Repairs Program-----	8
Minor Car Repair Assistance Program-----	9
Prescription Drug Assistance-----	9
Prescription Eyeglass Assistance-----	10
Emergency Assistance Program-----	10
Low Income Home Energy Assistance Program (LIHEAP) -----	11
Employment/Job Readiness-----	12
Head Start (HS) -----	13
Locations-----	14
Service Area-----	15
Demographics-----	16
Families-----	17
Enrollment-----	18
Medical and Dental-----	19
Parent Involvement Activities-----	20
Funding/Budgetary Expenditures-----	21
Results of Financial Audit-----	22
Results of Most Review-----	23
Efforts to Prepare Children for Kindergarten-----	24
Weatherization-----	25-26

# HISTORY

Coastal Plain Area Economic Opportunity Authority, Inc. (CPAEOA) began as a program development grant from the Office of Economic Opportunity, and was awarded to the coastal Plain Area Planning and Development commission on January 14, 1965. This grant enabled a program developer to begin the groundwork for the development of a community organization to serve the poor and elderly. This work led to the incorporation of the Coastal Plain Area Economic Opportunity Authority, Inc. on April 8, 1966, under the laws of the state of Georgia, as a private non-profit corporation serving the ten counties of the coastal plain area of Georgia effective April 1, 1966 the Agency superseded the area planning and development commission as the office of economic opportunity grantee.

CPAEOA is dedicated to providing services, assistance and other activities designed to develop employment opportunities, improving human performance, motivation, and productivity and generally by bettering the conditions under which people in the area live, learn and work.

## SERVICE AREA



Coastal Plain Area EOA, Inc. Service Area

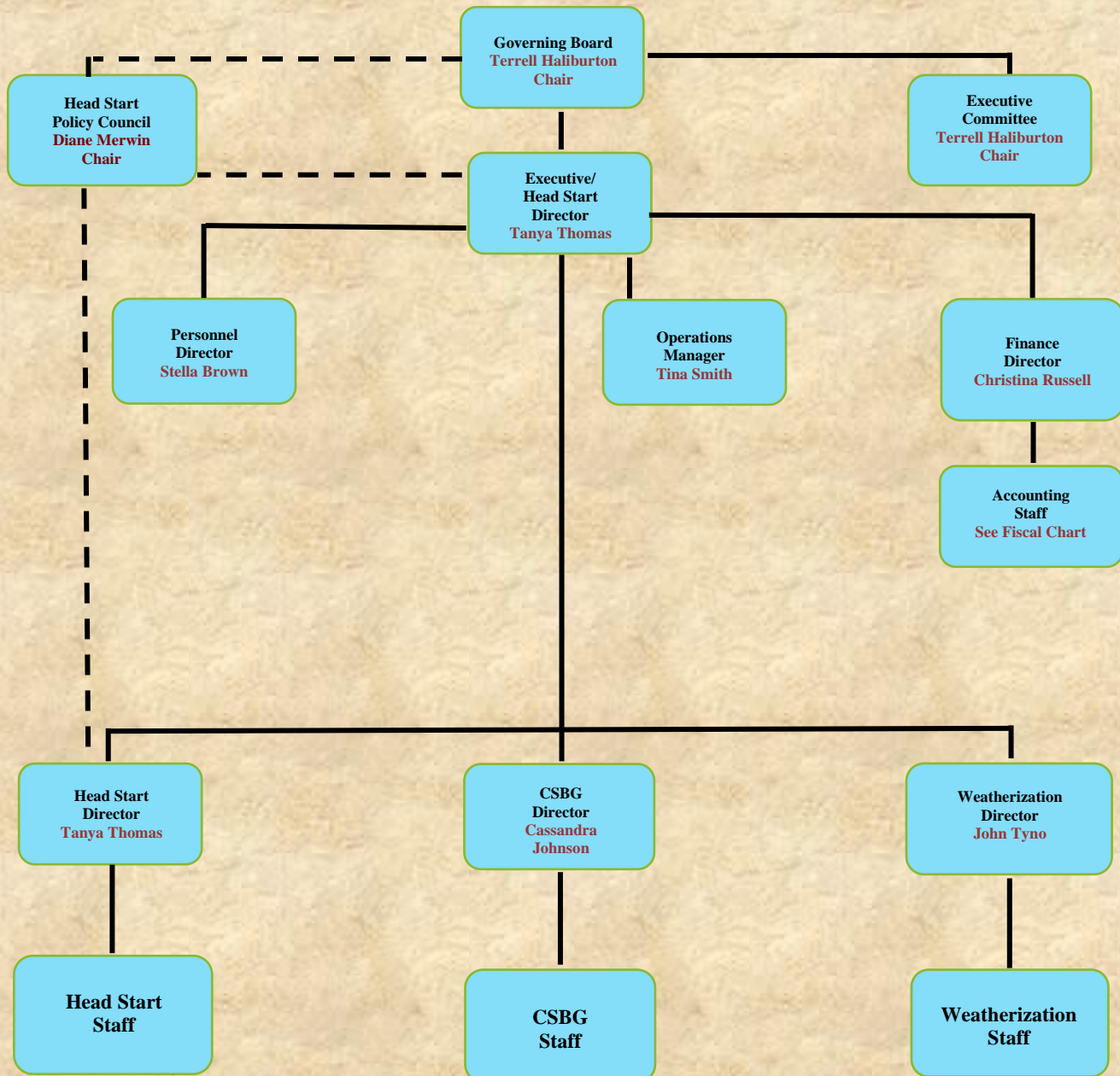






Coastal Plain Area E.O.A. Inc.  
A COMMUNITY ACTION AGENCY

# ORGANIZATIONAL CHART



This Agency chart defines the reporting relationships within CPAEOA. Solid lines indicate direct reporting relationships. Dotted lines indicate indirect reporting relationships. The Head Start Policy Council represents an approval/disapproval relationship regarding specific decisions made within the Agency.

## MESSAGE FROM THE BOARD CHAIRMAN



I am proud to be a part of Coastal Plain Area E.O.A. In the early 1960's I attended the Project Headstart School. It was an eight week summer program then. I went on to a four year Air Force Enlistment and work for 27 years as a truck driver.

I retired early to move back home, and get involved by volunteering at RL Mack Headstart. I was elected to Policy Council and served as the Policy Council Chair. During my time serving as the policy council chair, I became a member of the Georgia Headstart Association. I was then elected to serve on the Georgia Headstart Association Executive Board. I am still apart of the Executive Board, as of 5 years now.

Upon serving on the Board, I was elected as the Coastal Plain Area E.O.A. Executive Board Chair. I am beyond proud to be a part of such a great program. I look forward to spending more time, and years within this program. I'm so thankful that I was given the opportunity to serve you all.

**Sincerely,  
Terrell Haliburton**

# 2018-2019 BOARD OF DIRECTORS

NAME	BOARD POSITION	COUNTY
<b>Marilyn Dye</b>	Secretary	Lowndes
<b>James Maxwell</b>	Member	Brooks
<b>Dr. Nancy Dennard</b>	Fiscal Rep.	Brooks
<b>John Gee Edwards</b>	Attorney Rep.	Lowndes
<b>Eric Howard</b>	Member	Lowndes
<b>Jeannie Little</b>	Member at Large	Brooks
<b>Gail Jones-Winston</b>	Member	Lowndes
<b>Morris Alexander</b>	Parliamentarian	Tift
<b>Arlinda Murrell</b>	Member	Irwin
<b>Travis Johnson</b>	Member	Irwin
<b>Pearlene Daniels</b>	Member	Berrien
<b>Terrell Haliburton</b>	Chair/PC Liaison	Tift
<b>Israel Cortez</b>	Vice Chair	Echols
<b>Jamie Taylor</b>	ECE Rep.	Berrien



## MESSAGE FROM THE EXECUTIVE/HEAD START DIRECTOR

Coastal Plain Area Economic Opportunity Authority, Inc. has been a part of helping the 10 county Coastal Plain Area for over 50 years. We have invested more than \$250 Million Dollars into the communities that our employees, clients, and families live, work, and serve.

Coastal Plain Area EOA, Inc., has always strived to achieve our mission statement “People Helping People to Achieve Self Sufficiency.” However in this world of change, we too are changing, not only are we helping people to achieve self -sufficiency, we are changing our communities by empowering people and enriching families and communities.

I have served Coastal Plain Area EOA for over 15 years. I began my experience with Coastal Plain Area EOA fourteen years ago as the Education Coordinator and then later the Head Start Director. Now presently I am proud to serve as the Executive Director for the Agency. I am proud to be a part of the positive changes being emulated throughout our agency. As you read our Annual Report, you will see the positive changes that are not only taking place within our agency, but those that we have put into motion throughout our 10 county communities.

We are thankful for everyone who has helped in making Coastal Plain Area EOA, Inc. The Board of Directors, for encouraging us to move forward into the future. Our Directors, who have done outstanding with their program, training employees and making a difference within our agency. The employees that are there every day with a smile on their face, helping students and clients, showing everyone that Coastal Plain Area EOA. Incorporated is your local community action agency.

It is my honor as Executive Director to present to you our 2019 Coastal Plain Area Economic Opportunity Authority Incorporated Annual Report.

*Tanya Thomas*

Executive/Head Start Director



# CSBG

## COMMUNITY SERVICES BLOCK GRANT PROGRAM

All direct services, other than Head Start services, are provided through a network of ten Community Service Centers (CSC). CSC's are located in each of the ten counties within the Agency's primary service area. Each CSC is an active part of the local community, and provides a variety of community services for individuals of all ages.

A major strength of the CSC's is that no two are alike. Each one provides its own array of services to meet the specific needs that are unique to each county in the service area. With primary funding through the Community Services Block Grant (CSBG), services range from job skills training to management counseling and crisis intervention.

**Advocacy:** A priority for all CSC's is to provide advocacy. The CSC's serve as advocates on local public health issues such as affordable housing, utility rates, and health care. Assistance is also provided to low-income residents who are not Medicare-eligible, to help them to apply for discount prescription medication and prescription eyeglass programs.

Without the ability of the CSC's to provide these very important components, many of those who need assistance would not be able to get the help which they need. The advocates are crucial to the success of the Community Service Centers. We are the "Helping Hands."

## COMMUNITY SERVICE CENTERS

**BEN HILL COUNTY**  
223 S GRANT ST  
FITZGERALD, GA 31750  
229-426-5177

**IRWIN COUNTY**  
311 VO TECH ROAD  
OCILLA, GA 31774  
229-468-5186

**ECHOLS COUNTY**  
170 CHURCH OF GOD ST.  
STATENVILLE, GA 31648  
229-559-3472

**BERREN COUNTY**  
402 HAZEL AVENUE  
NASHVILLE, GA 31309  
229-686-7871

**LANIER COUNTY**  
108 S. Hwy 135  
LAKELAND, GA 31635  
229-482-3435

**TURNER COUNTY**  
124 E. COLLEGE STREET  
ASHBURN, GA 31714  
229-567-2844

**BROOKS COUNTY**  
400 COURTLAND AVENUE  
QUITMAN, GA 31643  
229-263-7818

**LOWNDES COUNTY**  
900 S. TROUPE ST.  
VALDOSTA, GA 31601  
229-242-8814

**COOK COUNTY**  
303 S. COLLEGE ST.  
SPARKS, GA 31647  
229-549-8780

**TIFT COUNTY**  
2737 S. CENTRAL AVE SUITE 4  
TIFTON, GA 31794  
229-382-2960





## MINOR HOME REPAIRS PROGRAM



The goal of the Minor Home Repairs Program is to help the elderly and disabled home owners to be safe in their homes, and that they have easier access. Repairs include the installation of handicapped toilets and grab bars, construction of steps and front porches, installation of wood doors, replacement of faucets and sinks, repairing of holes in floors, doors, walls and ceilings, and other repairs which may be needed. A conscious effort is made to ensure that clients in all ten counties benefit from this Program.

From October 1, 2018 through September 30, 2019, **Ten (10) families** received services through this Program. A **total of \$14,044.01** from the CSBG was expended to purchase construction materials to complete repairs on these homes, ensuring the safety of the homes.

### **Before and after pictures**





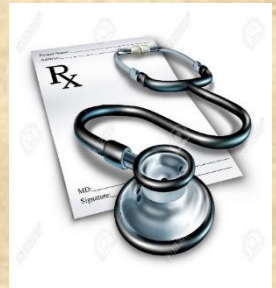
## MINOR CAR REPAIR ASSISTANCE

This program was put in place to help assist those individuals who are currently employed but experience problems with their vehicle and are unable to get to and from work causing issues with their employer. In order to maintain employment and reliable transportation, clients were able to receive assistance with their car repairs. Clients must have been employed for 6 months or more and provide a verification of employment. Examples of Minor Car Repair include, but are not limited to, replace battery, belts, seatbelts, lights, thermostats, wiper blades, etc. The clients that were approved for this program received a minimum of \$300.00 upwards to a maximum of \$2,500.00 towards their car repairs and was paid directly to the vendor that provided the repair services. From October 1, 2018 through September 30, 2019 **Five (5) families** received services through this Program. A **total of \$8,449.36** from the CSBG was expended under the Community Services Block Grant Minor Car Repair Program. The breakdown is as follows;



## PRESCRIPTION DRUG ASSISTANCE

The Prescription Drug Assistance Program was able to aid **9 individuals** from October 1, 2018 through September 30, 2019. The average amount expended on each person was \$50.00 for a **total amount of \$603.74**. This benefit assured that those who had medical issues and needed medication but could not afford to pay for it were able to have their needs met. Families who have limited resources sometimes must make a decision whether to buy food, pay rent or utilities, or buy their medications.



This benefit allowed families to use their household resources on other necessities such as those listed earlier. The CSC's in all service areas work closely with local pharmacies and utilize other resources, such as discount programs, which are offered by pharmacies such as Chancy Drugs, Wal-Mart, Tifton Drugs, R&M Cash Drugs, Harvey's, Fred's Discount Store and Lakeland Drug Company and more.

## PRESCRIPTION EYEGLASS ASSISTANCE



Through an exclusive MOU / Contract with America's Best Contacts & Eyeglasses in Valdosta Georgia, CSBG's Prescription Eyeglass Assistance Program was able to aid **25 individuals** from October 1, 2018 through September 30, 2019 with eye exams and 1-2 pairs of quality prescription eyeglasses. This partnership allowed each client to receive up to \$300.00 towards the eye exam, prescription lens' and fashionable frames for a **total amount of \$7,369.45**. This benefit assured that those who had untreated vision needs and without insurance were able to have their needs met.



## COMMUNITY SERVICES BLOCK GRANT EMERGENCY ASSISTANCE (EMA) PROGRAM



Clients who faced a crisis in paying their utility bills received assistance through the Community Services Block Grant Emergency Assistance Program. Clients could receive a minimum amount of \$50.00 upward to a maximum of 450.00 toward their water bills depending on the need during the period of October 1, 2017 through September 30, 2018 and a minimum of \$200.00 upward to a maximum of \$1,700.00 toward their electric or gas bills.

From October 1, 2018 through September 30, 2019, a total of **\$3,112.37** was expended for utility assistance. A total of **20** households were served.

CSBG funding	
Administrative	\$143,604.70
Program	\$472,405.30
<b>Total</b>	<b>\$616,010.00</b>





## **LOW-INCOME HOME HEATING ENERGY ASSISTANCE PROGRAM**



With funding from the Department of Human Resources, the Low-Income Energy Assistance Program (LIHEAP) is able to assist low income families in offsetting the increased costs of energy for home heating during the winter months. Priority is given to households comprised of those who are 65 years or older, those who are home bound, and other disabled clients. Funding is also set aside for those with life-threatening medical conditions.

Although this service is for energy costs during the winter months, in some cases, the Federal Government will release funds to assist the elderly and those who are homebound with cooling assistance.

Some of the benefits from this energy program are as follows:

- Reduces the incidents of health problems attributable to winter cold;
- Enables the elderly and those with life threatening medical conditions to maintain independence while maintaining a state of well-being;
- Helps to keep fuel costs from rising by reducing billing write-offs for energy suppliers;
- Circumvents energy cut-offs for homebound, elderly and other low-income households;
- Stimulates the local economy through funds put into circulation for the payment of energy bills;

Funds are made available during the winter months to help individuals who are out of options and who are therefore, in a crisis situation. These individuals may be about to have their utility or heating services disconnected, may have run out of heating fuel, or are faced with extreme winter temperatures or have some other emergency.

The LIHEAP services were provided to more than 6,927.00 households, each receiving a maximum of \$350.00. **The total amount expended from October 1, 2018 through September 30, 2019 for the Program was \$2,395,477.00**

<b>APPLICATION TYPE</b>	<b>HOUSEHOLDS SERVED</b>	<b>BENEFIT AMOUNTS</b>
Regular LIHEAP Applications	6,856	\$2,371,000.00
Crisis LIHEAP Applications	71	\$24,477.00
Total Administrative Costs	--	\$185,034.23
<b>TOTAL</b>	<b>6,927</b>	<b>\$2,580,511.23</b>

## EMPLOYMENT/JOB READINESS

Coastal Plain Area E.O.A, Inc. has made a significant contribution to our service area through the Job Readiness Program. The Welfare Reform Initiative has focused on the need for those who receive public assistance and are capable of working, to end reliance on public assistance and enter the work force. Of course, many challenges were encountered because so many individuals were not equipped educationally to obtain employment. The Employment/Job Readiness Program assists clients in obtaining the necessary education, training, work experience and work ethics in order to find and maintain gainful employment. Realizing that most of the individuals have had no work experience; thus, no personal budgeting skills, the Program also provides financial responsibility training. The Program is designed to:



- Provide support services such as GED and/or vocational training, as well as post-secondary education;
- Assist in helping clients to learn essential job retention skills, gain practical work experience and obtain full-time employment;
- Help those who are presently employed to maintain employment and seek advancement by teaching them essential job retention skills;

During this fiscal year, a total of **\$80.00** was expended to **ONE client** to help them receive their GED. This allowed them to be more marketable, and more jobs were available to them.



Valuable Life Skills Training is provided in addition to budgeting and money management in order to help clients develop wise spending and saving habits and learn to manage their resources more efficiently.

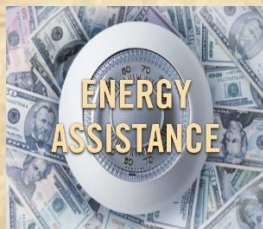




# Rental/Energy/Water Assistance & Youth Scholarship



The Rental Assistance Program provides emergency assistance to avoid eviction or homelessness. Coastal Plain provided assistance to one family in the amount of \$485.



The Energy Assistance Program assists eligible low-income households with their heating and cooling energy costs, bill payment assistance, energy crisis assistance, weatherization and energy-related home repairs. Coastal Plain assisted (6) clients in the amount of \$2, 435.77.



Water Assistance- Coastal Plain provides a one-time payment to help low-income households prevent the disconnection of water due to non-payment, and to maintain a safe and healthy environment for surrounding counties who meet eligibility requirements. We assisted (14) Clients in the amount of 676.60.



While some camps already offer scholarships to families with financial needs, each has its own application process and deadline. Coastal Plain assisted (3) kids from the Haven for a summer youth scholarship totaling in the amount of \$1,593.00.





# HEAD START

**HEAD START IS A COMPREHENSIVE EARLY CHILDHOOD DEVELOPMENT PROGRAM FOR ECONOMICALLY DISADVANTAGED PRESCHOOL CHILDREN AND THEIR FAMILIES. THE OBJECTIVES OF THIS PROGRAM ARE:**

- 1.To improve the child's health;
- 2.Aid the child's Intellectual, Social, and Emotional Development;
- 3.Improve and Expand the child's ability for self-expression; and
4. Help both the enrollees and their families gain greater confidence, self-respect, and dignity. Eligibility guidelines require that enrollees, including children with disabilities, are between three years of age and compulsory school attendance, and at least ninety percent are from low-income families.





# Head Start Locations

## Nashville Head Start \* \*

402-A Hazel Avenue  
Nashville, GA 31639  
(229) 686-3085 F (229) 686-2030  
E-Mail - [nashville@cpheadstart.org](mailto:nashville@cpheadstart.org)

## Ben Hill Head Start \* \* \*

410 E. Altamaha Street  
Fitzgerald, GA 31750  
(229) 423-3191 F (229) 423-1021  
E-Mail - [benhill@cpheadstart.org](mailto:benhill@cpheadstart.org)

## Cook Head Start \* \*

504 W. First Street  
Adel, GA 31620  
(229) 896-7322 F (229) 896-4275  
E-Mail - [cook@cpheadstart.org](mailto:cook@cpheadstart.org)

## Brooks Head Start \* \*

1301 N. Martin Luther King Dr.  
Quitman, GA 31643  
(229) 263-5662 F (229) 263-5633  
E-Mail - [brooks@cpheadstart.org](mailto:brooks@cpheadstart.org)

## Lowndes 1 Head Start \* \*

1613 Ulmer Avenue  
Valdosta, GA 31601  
(229) 244-6300 F (229) 244-8706  
E-Mail - [lowndes1@cpheadstart.org](mailto:lowndes1@cpheadstart.org)

## Hallmark Heights Head Start \* ★ ★

605 Hightower Street  
Valdosta, GA 31601  
(229) 244-7773 F (229) 244-7850  
E-Mail - [hallmark@cpheadstart.org](mailto:hallmark@cpheadstart.org)

## Irwin Head Start \* ★

311 Vo-Tech Rd.  
Ocilla, GA 31774  
(229) 468-5712 F (229) 468-7907  
E-Mail - [irwin@cpheadstart.org](mailto:irwin@cpheadstart.org)

## Hahira Head Start \* \*

403 Main Street  
Hahira, GA 31632  
(229) 794-3310 F (229) 794-3323  
E-Mail - [hahira@cpheadstart.org](mailto:hahira@cpheadstart.org)

## Lanier Head Start \* \* \*

810 South Oak St.  
Lakeland, GA 31635  
(229) 482-3467 F (229) 482-3175  
E-Mail - [lanier@cpheadstart.org](mailto:lanier@cpheadstart.org)

## BW Lester Head Start \* \* \*

2522 Copeland Road  
Valdosta, GA 31601  
(229) 247-9750 F (229) 247-9751  
E-Mail - [bwlester@cpheadstart.org](mailto:bwlester@cpheadstart.org)

## R L Mack Head Start \* \*

64 Tifton Eldorado  
Tifton, GA 31794  
(229) 382-5110 F (229) 387-6770  
E-Mail - [tift@cpheadstart.org](mailto:tift@cpheadstart.org)

## Turner County Head

524 Martin Luther King Dr.  
Ashburn, GA 31714  
(229) 567-9233 F (229) 567-0876  
E-Mail - [turner@cpheadstart.org](mailto:turner@cpheadstart.org)

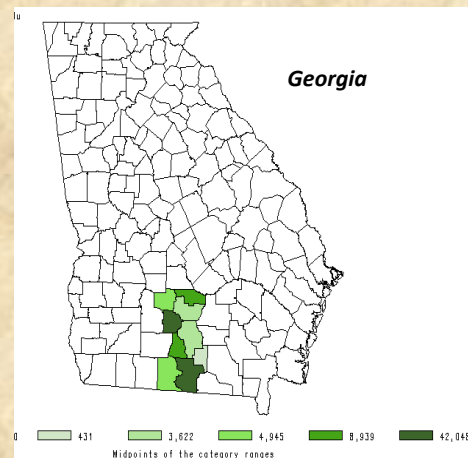
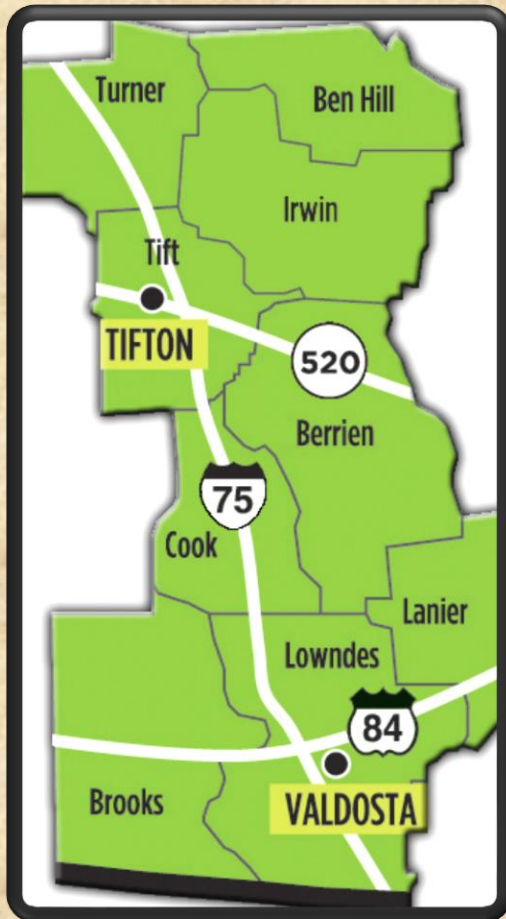


Quality Rated Child Care of Georgia is a resource for parents and families to help them find high-quality child care, preschool, and Pre-K programs. Quality Rated has an online tool that helps families find child care in their area that have been evaluated by credentialed early childhood experts and deemed high-quality. Quality Rated assigns one, two or three stars, with three being the highest, to early education care programs that meet or exceed the minimum state requirements. Stars beside the center name signifies rating of each site.





# Head Start Service Area



Ben Hill	254 Square Miles	Fitzgerald	5 Classrooms
Turner	290 Square Miles	Ashburn	2 Classrooms
Irwin	363 Square Miles	Ocilla	2 Classrooms
Tift	269 Square Miles	Tifton	7 Classrooms
Berrien	458 Square Miles	Nashville	2 Classrooms
Cook	233 Square Miles	Adel	4 Classrooms
Lanier	199 Square Miles	Lakeland	2 Classrooms
Brooks	498 Square Miles	Quitman	3 Classrooms
Lowndes	510 Square Miles	B.W. Lester	4 Classrooms
		Hahira	2 Classrooms
		Hallmark Heights	5 Classrooms
		Lowndes-I	10 Classrooms
9 Counties	3074 Square Miles	12Centers	48 Classrooms





# HEAD START

## Population Characteristics

Race and Ethnicity	# of children	
	(1) <i>Hispanic or Latino origin</i>	(2) <i>Non-Hispanic or Latino origin</i>
a. American Indian or Alaska Native	0	0
b. Asian	0	2
c. Black or African American	0	747
d. Native Hawaiian or other Pacific Islander	0	0
e. White	0	163
f. Biracial/Multi-racial	13	48
g. Other – Hispanic, Arabic, and Haitian	68	7

The racial composition of the total children in Head Start served this year is Black 71%, White 16%, Hispanic 7%, and Multiracial 6%. Our current funded enrollment is 895. The program has a total of 68 Hispanic children which is double from our previous year. The need for bi-lingual teachers has grown. Material are printed by Head Start in Spanish to accommodate the families. The rural farming area in South Georgia has attracted more each year.





# HEAD START

## Head Start Program Information 2018-2019

Centers	Children Riding Bus	Parental Status	
		Two	One
B.W. Lester	64	29	69
Ben Hill	41	16	82
Brooks	21	4	49
Cook	35	22	50
Hahira	0	14	28
Hallmark	0	17	95
Irwin	0	14	24
Lanier	0	25	29
Lowndes-I	136	16	156
Nashville	0	18	32
Tifton	38	46	145
Turner	0	13	45
<b>Totals</b>	<b>335</b>	<b>177</b>	<b>801</b>

ChlldPlus.net PIR 2018-2019



*Total # of families served  
978*





# HEAD START

## 2018-2019 Program Enrollment Information

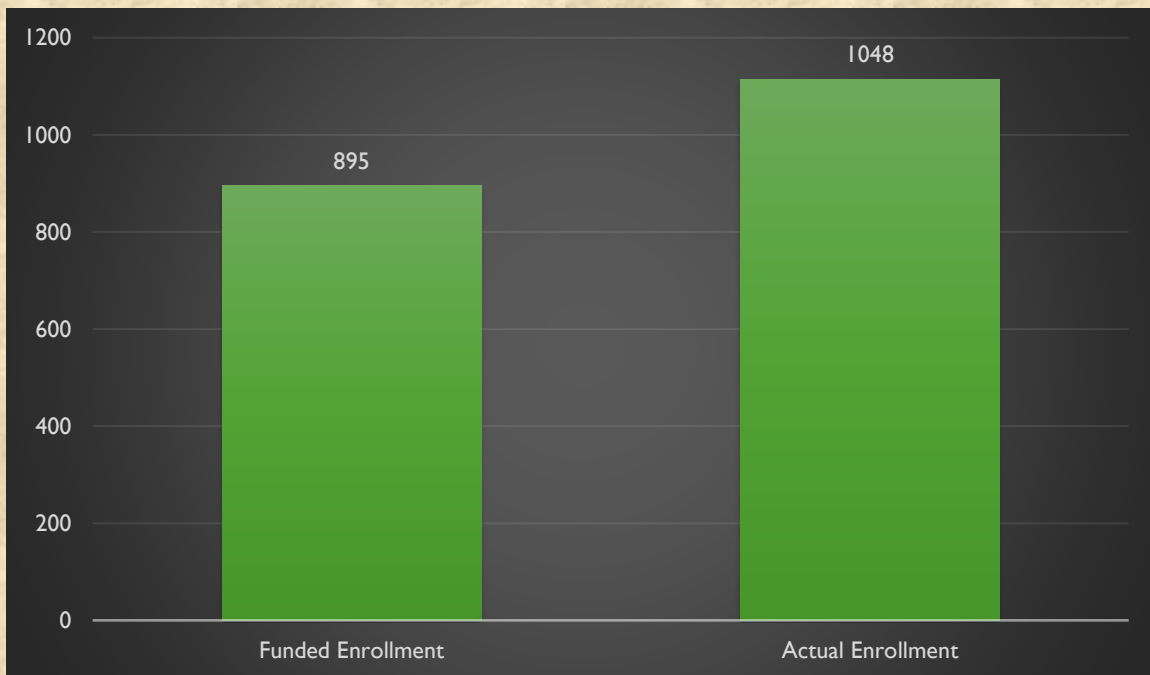
Counties	Income Eligible	Medicaid	TANF	SSI
Berrien	45	48	0	7
Ben Hill	101	101	1	8
Brooks	68	68	0	2
Cook	81	81	1	7
Irwin	38	38	1	4
Lanier	56	51	0	5
Lowndes	428	392	2	36
Tifton	189	198	0	13
Turner	42	51	0	2
<b>Totals</b>	<b>1048</b>	<b>1014</b>	<b>5</b>	<b>84</b>

ChldPlus.net PIR 2018-2019

*Head Start's average monthly enrollment was 99.4%*

*Age 3 year olds served – 810*

*Age 4 year olds served – 305*

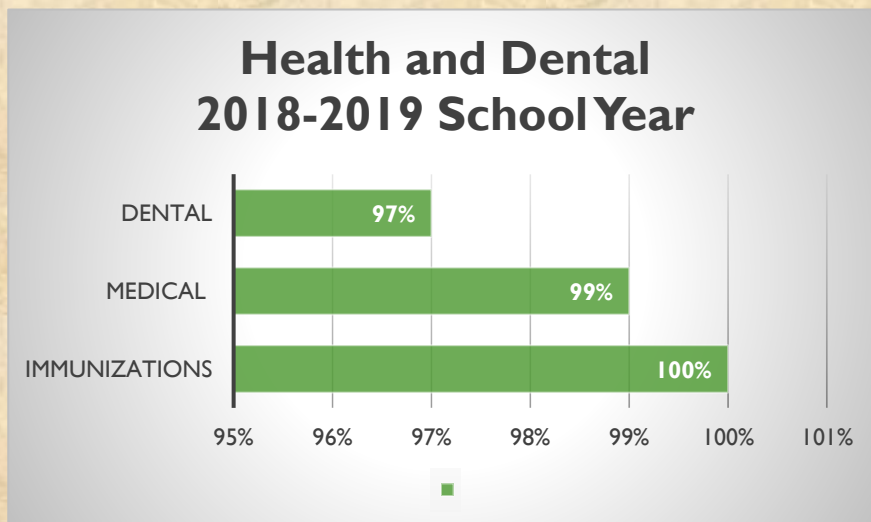






# HEAD START

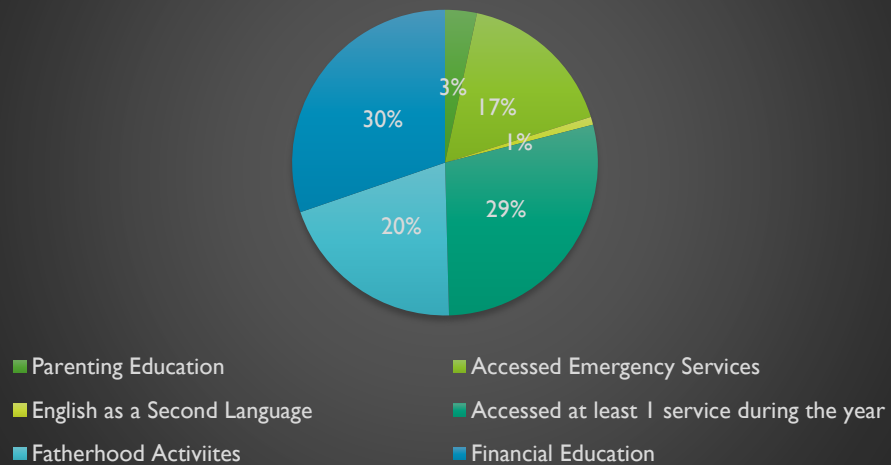
## Medical and Dental Exams



# Head Start Parent Involvement Activities



**Parent Involvement Activities  
Services Accessed**







# HEAD START



## Public and Private funds received

Head Start	\$7,266,849.00
Non-federal match	1,816,713
Child & Adult Care Food Program	743,511
State funded Pre-K	225,433
<b>TOTAL FUNDS RECEIVED</b>	<b>\$10,052,506.00</b>



## Budgetary Expenditures and proposed budget for the fiscal year

	Head Start Operating	HS T/TA	HS Non-Federal Match
<b>Salaries</b>	\$4,319,718.00		
<b>Fringe Benefits</b>	1,415,556.00		
<b>Travel</b>	61,086.00		
<b>Equipment</b>			
<b>Supplies</b>	117,990.00		
<b>Contractual</b>	77,000.00		
<b>Construction</b>			
<b>Other</b>	1,118,515.00	\$84,984	1,816,713.00
<b>TOTAL</b>	<b>\$7,181,865.00</b>	<b>\$84,984</b>	<b>\$7,266,849.00</b>

## **Results of Most Recent Financial Audit**

### **Period ending March 31, 2019**

**Hudson & NeSmith, CPAs**  
Member

*American Institute of Certified Public Accountants*

*Georgia Society of Certified Public Accountants*

*Private Companies Practice Section*

### ***Opinion***

In our opinion, the financial statements referred to above present fairly, in all material respects, the financial position of Coastal Plain Area Economic Opportunity Authority, Inc., as of March 31, 2019, and the changes in its net assets and its cash flows for the year then ended in accordance with accounting principles generally accepted in the United States of America.

### ***Opinion on Each Major Federal Program***

In our opinion, Coastal Plain Area Economic Opportunity Authority, Inc. complied, in all material respects, with the types of compliance requirements referred to above that could have a direct and material effect on each of its major federal programs for the year ended March 31, 2019.

There was one (1) finding identified as needing improvement.

### **2019-01 Bank Reconciliations**

Bank reconciliations were not performed accurately and balanced to the Board of Directors' monthly approved financial statements. According to the entity's ***Fiscal Management Procedures***, all bank accounts are to be reconciled within no later than the end of the following month upon receipt of the bank statements by the Agency.

A corrective action plan has been implemented to ensure compliance with the agencies Financial Management Procedures and funding regulations.

A full copy of the audit can be viewed on our website at

[www.coastalplain.org](http://www.coastalplain.org).



## Most recent review- Results from CLASS Observations

A CLASS consultant came and conducted a review from **10/15/2018-10/18/19**.

Observations were conducted in preschool center-based classrooms using the Pre-K Classroom Assessment Scoring System (CLASS). The CLASS tool look at three domains and ten dimensions of teacher-child interactions and measures those observed interactions on a seven point scale.

DOMAIN	Score	DOMAIN	Score	DOMAIN	Score
Emotional Support	5.98	Classroom Organization	5.61	Instructional Support	2.43

DIMENSIONS					
Positive Climate	5.97	Behavior Management	5.86	Concept Development	2.05
Negative Climate*	1.02	Productivity	5.78	Quality of Feedback	2.4
Teacher Sensitivity	5.77	Instructional Learning Formats	5.2	Language Modeling	2.84
Regard for Student Perspectives	5.2				

\*Note: To calculate the Emotional Support domain, subtract the Negative Climate score from 8, add the Positive Climate, Teacher Sensitivity, and Regard for Student Perspective scores, then divide by 4.

OHS CLASS® Descriptive Statistics, 2018 National Grantee-Level Scores by Dimension					
Domain	Dimension	Mean	Standard Deviation	Minimum	Maximum
Emotional Support	Positive Climate	6.04	0.41	4.45	7.00
	Negative Climate	1.06	0.09	1.00	1.50
	Teacher Sensitivity	5.90	0.43	4.33	7.00
	Regard for Student Perspectives	5.44	0.53	3.00	7.00
Classroom Organization	Behavior Management	5.99	0.43	4.25	7.00
	Productivity	6.10	0.39	4.89	7.00
	Instructional Learning Formats	5.29	0.55	3.00	7.00
Instructional Support	Concept Development	2.44	0.58	1.00	4.42
	Quality of Feedback	2.98	0.62	1.42	4.95
	Language Modeling	3.46	0.62	1.50	5.50



Our Head Start program strives to ensure each child is prepared for their next educational experience. Creative Curriculum is used as our developmental guide for classroom activities. Each child is assessed using the Brigance Assessment tool. This tool evaluates children's early development and kindergarten readiness and assist teachers with identifying potential delays or giftedness, supporting referrals for services, and planning individualized instruction. In addition to Brigance, we use the Teaching Strategies Gold (TSG) assessment that aligns with Creative Curriculum. TSG is an ongoing, teacher observation-based tool that ensures the success of the students. Our school readiness goals are listed below. They are aligned with the state and local school systems goals and expectations.

### Efforts to prepare children for kindergarten

Domain	School Readiness Goals 2018-2019
<b>Language and Literacy</b>	<ol style="list-style-type: none"><li>1. Children will comprehend an increasingly complex and varied vocabulary.</li><li>2. Children will increase their use of language to communicate with adults and peers. (Children who are dual language learners will demonstrate proficiency in their home language while acquiring beginning proficiency in English.)</li><li>3. Children will use and understand print as meaningful and organized symbolic system of communication.</li><li>4. Children will identify names and sounds associated with letters and have an awareness that language can be broken down into words and syllables.</li></ol>
<b>Cognition &amp; General Knowledge</b>	<ol style="list-style-type: none"><li>5. Children will use scientific skills and methodology to gain a better understanding of information and activities in their surroundings.</li><li>6. Children will increase their skills in remembering information and in being aware of their own thinking.</li><li>7. Children will use math regularly and in everyday routines to count, compare, relate, identify patterns, and problem solve.</li></ol>
<b>Approaches to Learning</b>	<ol style="list-style-type: none"><li>8. Children will show an interest in varied topics and activities, an eagerness to learn, creativity, and independence in their interactions with activities and materials.</li><li>9. Children will demonstrate persistence and sustained attention when working with materials, activities and information.</li></ol>
<b>Physical Development and Health</b>	<ol style="list-style-type: none"><li>10. Children will maintain healthy and age appropriate physical well-being.</li><li>11. Children will develop safe and healthy habits.</li><li>12. Children will increase control of their small and large muscles.</li></ol>
<b>Social &amp; Emotional Development</b>	<ol style="list-style-type: none"><li>13. Children will engage in positive peer relationships and interactions with familiar adults and peers.</li><li>14. Children will learn to internalize (follow) classroom rules, routines, and directions.</li></ol>



# Weatherization

## Georgia Environmental Finance Authority



Coastal Plain Area E.O.A. Weatherization Program provides energy conservation, and health and safety measures to low-income families in its 10-county area. The program helps lower the energy burden on the household and provide a healthier living environment for its occupants. The program intends to spend all of its DOE and DHS funds for 2018, totaling \$276,589.58, which will enable us to provide services to 30 homes.

Some of the energy conservation measures that are installed on the home are as listed-up to R-38 Attic insulation, sealing, repair or replace ductwork, air sealing of infiltration areas, repair or replace combustion and electric appliances such as heating and cooling units, water heaters and refrigerators. Some of the health and safety measures that are installed are as listed-range hood/kitchen exhaust fans, bathroom exhaust fans, moisture barriers in crawlspaces, CO/Smoke alarms and fresh air ventilation systems.

The Weatherization Program uses advanced diagnostic equipment to measure air infiltration, pressure imbalances and ductwork leakages. Combustion safety testing is done on homes with Natural or Propane gas when it's the fuel source for the appliances in the home. All of these test help insures the home is safe and is a healthy environment for its occupants. By lowering these homes energy consumption, it benefits all of us by keeping our energy rates lower and enabling the energy source to allow more clients on the present grid system. We all need to conserve to allow this, building a new energy plant because the existing grids are full will surely raise all of our rates. It allows our clients to have more disposable income on other household or personal needs.

Coastal Plain E.O.A., Inc. Weatherization Program is rated by Georgia Environmental Finance Authority as a High Performing Agency, the highest rating. There are only two High Performing Agencies out of 14 Agencies in the State of Georgia. We are very proud of this rating and intend to provide the services required to keep it.



# WEATHERIZATION







Coastal Plain Area E.O.A. Inc.  
A COMMUNITY ACTION AGENCY

We would like to thank all of our Community Partners that collaborate with our agency to provide services for families and children.

Coastal Plain Area EOA, Inc.

Websites listed below to follow, and keep updated with events, job listings, and more.

[www.coastalplain.org](http://www.coastalplain.org)



[www.twitter.com/@CPAEOA](https://www.twitter.com/@CPAEOA)



[www.instagram.com/Coastalplainvaldosta](https://www.instagram.com/Coastalplainvaldosta)



Coastal Plain Area E.O.A., Inc.  
1810 West Hill Avenue, Unit A6  
Valdosta, GA. 31601  
229-244-7860  
229-245-7885 (fax)