



Coastal Plain Area

Economic Opportunity Authority, Inc.

2019-2020

Annual Report



*“People Helping People to
Achieve Self-Sufficiency”*

Table of Contents

History	3
Organizational Chart	4
Message from the Board Chairman	5
Executive/Head Start Director	6
Board of Directors	7
Community Services	8
Weatherization	12
Head Start	13
Demographics	16
Enrollment	18
Family Engagement	19
Medical and Dental	20
Mental Health/ Disability	22
Financial Report	25
CLASS Results	28
Additional Services	30

HISTORY

Coastal Plain Area Economic Opportunity Authority, Inc. (CPAEOA) began as a program development grant from the Office of Economic Opportunity, and was awarded to the coastal Plain Area Planning and Development commission on January 14, 1965. This grant enabled a program developer to begin the groundwork for the development of a community organization to serve the poor and elderly. This work led to the incorporation of the Coastal Plain Area Economic Opportunity Authority, Inc. on April 8, 1966, under the laws of the state of Georgia, as a private non-profit corporation serving the ten counties of the coastal plain area of Georgia effective April 1, 1966 the Agency superseded the area planning and development commission as the office of economic

CPAEOA is dedicated to providing services, assistance and other activities designed to develop employment opportunities, improving human performance, motivation, and productivity and generally by bettering the conditions under which people in the area live, learn and work.

SERVICE AREA

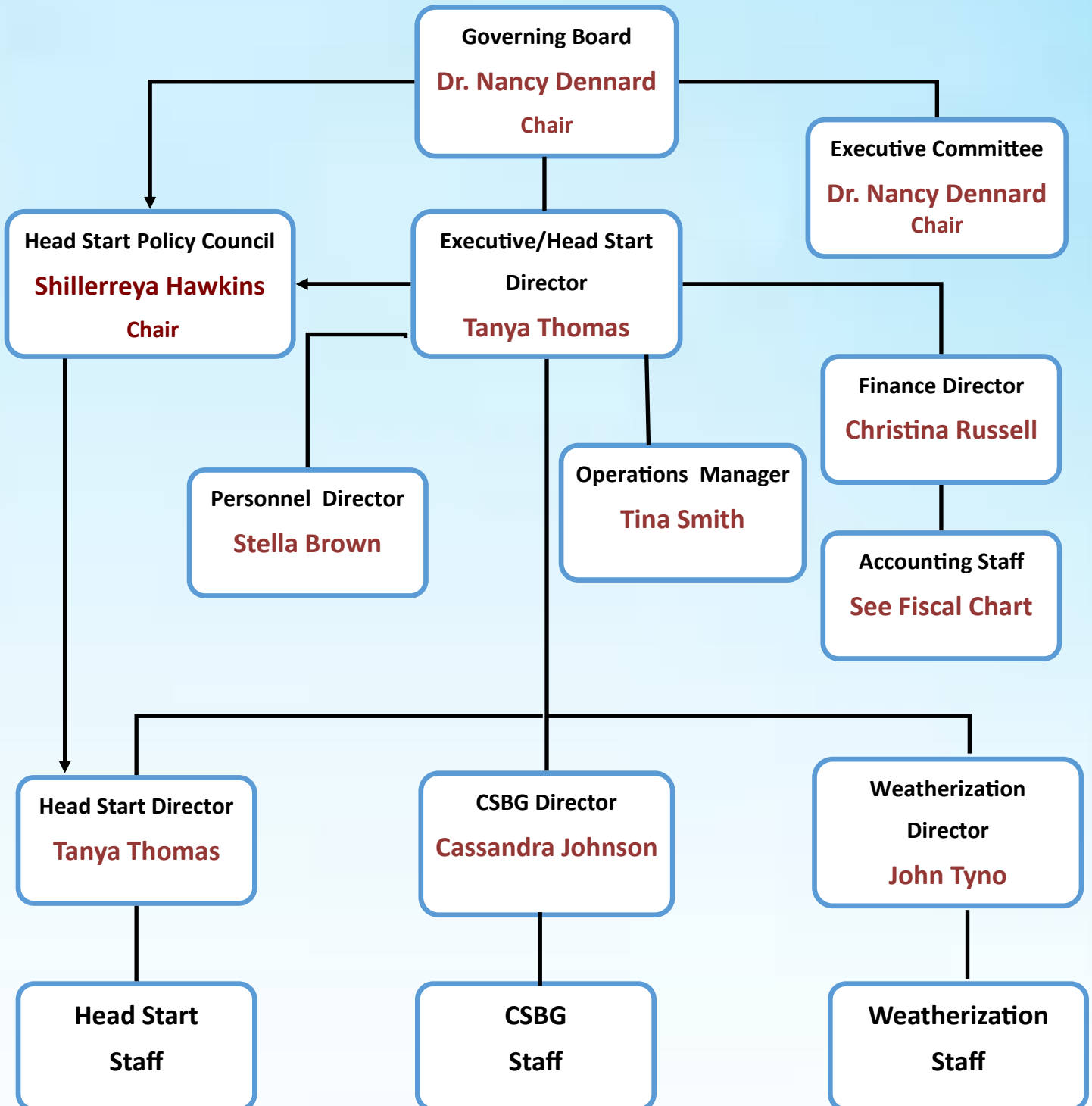


Coastal Plain Area EOA, Inc. Service Area





ORGANIZATIONAL CHART



This Agency chart defines the reporting relationships within CPAEOA. Solid lines indicate direct reporting relationships. Dotted lines indicate indirect reporting relationships. The Head Start Policy Council represents an approval/disapproval relationship regarding specific decisions made within the Agency.

MESSAGE FROM THE BOARD CHAIRMAN



More than 50 years ago President Lyndon Johnson said, "We must open the doors of opportunity. But we must equip our people to walk through those doors. With that he declared a War on Poverty and supported the Economic Opportunity Act, which led to the creation of the Coastal Plain Area Economic Opportunity, Inc.

Since then, CPAEOA has helped thousands of people with range of services, from early childhood, Community Services, to weatherizing homes. Each year we serve...and while we provide a wide range of economic supports, our goal is to create opportunities for people to achieve self-sufficiency and release themselves from poverty. CPAEOA goal is to help low income people and families overcome challenges and improve their economic standing in their lifetimes.

It is my privilege as the Board of Directors Chair to work with an amazing staff and dedicated board of directors. We are deeply committed to the CPAEOA mission, and we work each day with a renewed dedication.

On behalf of the CPAEOA Board of Directors we thank you for your support.

Sincerely,

Mayor Nancy Whitfield Dennard

MESSAGE FROM THE EXECUTIVE/HEAD START DIRECTOR

Coastal Plain Area Economic Opportunity Authority, Inc. has been a part of helping the 10 county Coastal Plain Area for over 50 years. We have invested more than \$250 Million Dollars into the communities that our employees, clients, and families live, work, and serve.

Coastal Plain Area EOA, Inc., has always strived to achieve our mission statement "People Helping People to Achieve Self Sufficiency." However in this world of change, we too are changing, not only are we helping people to achieve self - sufficiency, we are changing our communities by empowering people and enriching families and communities.

I have served Coastal Plain Area EOA for over 15 years. I began my experience with Coastal Plain Area EOA fourteen years ago as the Education Coordinator and then later the Head Start Director. Now presently I am proud to serve as the Executive Director for the Agency. I am proud to be a part of the positive changes being emulated throughout our agency. As you read our Annual Report, you will see the positive changes that are not only taking place within our agency, but those that we have put into motion throughout our 10



We are thankful for everyone who has helped in making Coastal Plain Area EOA, Inc. The Board of Directors, for encouraging us to move forward into the future. Our Directors, who have done outstanding with their program, training employees and making a difference within our agency. The employees that are there every day with a smile on their face, helping students and clients, showing everyone that Coastal Plain Area EOA. Incorporated is your local community action agency.

It is my honor as Executive Director to present to you our 2019 Coastal Plain Area Economic Opportunity Authority Incorporated Annual Report.

Tanya Thomas

Executive/Head Start Director

2019-2020 BOARD OF DIRECTORS

NAME	BOARD POSITION	COUNTY
Cathy Daniels	Member	Hahira
James Maxwell	Member	Brooks
Dr. Nancy Dennard	Chair	Brooks
John Gee Edwards	Member at Large Attorney Rep.	Lowndes
Eric Howard	Parliamentarian	Lowndes
Jeannie Little	Member at Large	Brooks
Gail Jones-Winston	Member	Lowndes
Morris Alexander	Member	Tift
Arlinda Murrell	Member	Irwin
Travis Johnson	Member	Irwin
Pearlene Daniels	Member	Berrien
Terrell Haliburton	Member	Tift
Israel Cortez	Member	Echols
Shirley P. Andrews	Vice Chair	Lowndes
Michael Acree	Member	Ben Hill



All direct services, other than Head Start services, are provided through a network of ten Community Service Centers (CSC). CSC's are located in each of the ten counties within the Agency's primary service area. Each CSC is an active part of the local community, and provides a variety of community services for individuals of all ages.

A major strength of the CSC's is that no two are alike. Each one provides its own array of services to meet the specific needs that are unique to each county in the service area. With primary funding through the Community Services Block Grant (CSBG), services range from job skills training to management counseling and crisis intervention.

Advocacy: A priority for all CSC's is to provide advocacy. The CSC's serve as advocates on local public health issues such as affordable housing, utility rates, and health care. Assistance is also provided to low-income residents who are not Medicare-eligible, to help them to apply for discount prescription medication and prescription eyeglass programs.

Without the ability of the CSC's to provide these very important components, many of those who need assistance would not be able to get the help which they need. The advocates are crucial to the success of the Community Service Centers. We are the "Helping Hands."

COMMUNITY SERVICE CENTERS

BEN HILL COUNTY

223 S GRANT ST
FITZGERALD, GA 31750
229-426-5177

IRWIN COUNTY

517 FOURTH ST
OCILLA, GA 31774
229-468-5186

ECHOLS COUNTY

170 CHURCH OF GOD ST.
STATENVILLE, GA 31648
229-559-3472

TIFT COUNTY

2737 S. CENTRAL AVE SUITE 4
TIFTON, GA 31794
229-382-2960

BERREN COUNTY

402 HAZEL AVENUE
NASHVILLE, GA 31309
229-686-7871

LANIER COUNTY

108 S. Hwy 135
LAKELAND, GA 31635
229-482-3435

TURNER COUNTY

124 E. COLLEGE STREET
ASHBURN, GA 31714
229-567-2844

BROOKS COUNTY

400 COURTLAND AVENUE
QUITMAN, GA 31643
229-263-7818

LOWNDES COUNTY

900 S. TROUPE ST.
VALDOSTA, GA 31601
229-242-8814

COOK COUNTY

303 S. COLLEGE ST.
SPARKS, GA 31647
229-549-8780



MINOR CAR REPAIR ASSISTANCE

This program was put in place to help assist those individuals who are currently employed but experience problems with their vehicle and are unable to get to and from work causing issues with their employer. In order to maintain employment and reliable transportation, clients were able to receive assistance with their car repairs. Clients must have been employed for 6 months or more and provide a verification of employment. Examples of Minor Car Repair include, but are not limited to, replace battery, belts, seatbelts, lights, thermostats, wiper blades, etc. The clients that were approved for this program received a minimum of \$300.00 upwards to a maximum of \$550.00 towards their car repairs and was paid directly to the vendor that provided the repair services. From October 1, 2019 through September 30, 2020 **Eight (8) families** received services through this Program. A **total of \$2,624.87** from the CSBG was expended under the Community Services Block Grant Minor Car Repair Program.



PREScription DRUG ASSISTANCE

The Prescription Drug Assistance Program was able to aid **6 individuals** from October 1, 2019 through September 30, 2020. The average amount expended on each person was \$67.00 for a **total amount of \$401.58**. This benefit assured that those who had medical issues and needed medication but could not afford to pay for it were able to have their needs met. Families who have limited resources sometimes must make a decision whether to buy food, pay rent or utilities, or buy their medications.

This benefit allowed families to use their household resources on other necessities such as those listed earlier. The CSC's in all service areas work closely with local pharmacies and utilize other resources, such as discount programs, which are offered by pharmacies such as Chancy Drugs, Wal-Mart, Tifton Drugs, R&M Cash Drugs, Moon's Pharmacy, U Save It Pharmacy Adel and Lakeland Drug Company and more.



PREScription EYEGlass ASSISTANCE



Through an exclusive MOU / Contract with America's Best Contacts & Eyeglasses in Valdosta Georgia, CSBG's Prescription Eyeglass Assistance Program was able to aid **12 individuals** from October 1, 2019 through September 30, 2020 with eye exams and 1-2 pairs of quality prescription eyeglasses. This partnership allowed each client to receive up to \$500.00 towards the eye exam, prescription lens' and fashionable frames for a **total amount of \$3,218.82**. This benefit assured that those who had untreated vision needs and without insurance were able to have their needs met.

Rental/Energy



The Rental/Mortgage Assistance Program provides emergency assistance to avoid eviction or homelessness. Coastal Plain provided assistance to 80 families in the amount of \$77,449.69.



The Energy Assistance Program assists eligible low-income households with their heating and cooling energy costs, bill payment assistance, energy crisis assistance, weatherization and energy-related home repairs. Coastal Plain assisted (17) clients in

COMMUNITY SERVICES BLOCK GRANT EMERGENCY ASSISTANCE



CSBG funding	
Administrative	\$171,187.80
Program	\$489,176.65
Total	\$660,363.65

LOW-INCOME HOME HEATING ENERGY ASSISTANCE PROGRAM



With funding from the Department of Human Resources, the Low-Income Energy Assistance Program (LIHEAP) is able to assist low income families in offsetting the increased costs of energy for home heating during the winter months. Priority is given to households comprised of those who are 65 years or older, those who are home bound, and other disabled clients. Funding is also set aside for those with life-threatening medical conditions. Although this service is for energy costs during the winter months, in some cases, the Federal Government will release funds to assist the elderly and those who are homebound with cooling assistance.

Some of the benefits from this energy program are as follows:

- Reduces the incidents of health problems attributable to winter cold;
- Enables the elderly and those with life threatening medical conditions to maintain independence while maintaining a state of well-being;
- Helps to keep fuel costs from rising by reducing billing write-offs for energy suppliers;
- Circumvents energy cut-offs for homebound, elderly and other low-income households;

Stimulates the local economy through funds put into circulation for the payment of energy bills;

Funds are made available during the winter months to help individuals who are out of options and who are therefore, in a crisis situation. These individuals may be about to have their utility or heating services disconnected, may have run out of heating fuel, or are faced with extreme winter temperatures or have some other emergency.

The LIHEAP services were provided to more than 7,604 households, each receiving a minimum of \$350.00. **The total amount expended from October 1, 2019 through September 30, 2020 for the Program was \$2,395,477.00**

APPLICATION TYPE	HOUSEHOLDS SERVED	BENEFIT AMOUNTS
Regular LIHEAP Applications	4,352	\$1,711,350.00
Crisis LIHEAP Applications	952	\$370,150.00
H.E.A.T. Inc. Benefits	68	\$27,100.00
Regular LIHEAP Cooling Applications	2,232	\$888,600.00
Total Administrative Costs	--	\$227,043.67
TOTAL	7,604	\$3,224,243.67



Weatherization

Georgia Environmental Finance Authority



Coastal Plain Area E.O.A. Weatherization Program provides energy conservation, and health and safety measures to low-income families in its 10-county area. The program helps lower the energy burden on the household and provide a healthier living environment for its occupants.

The Weatherization Program uses advanced diagnostic equipment to measure air infiltration, pressure imbalances and ductwork leakages. Combustion safety testing is done on homes with Natural or Propane gas when it's the fuel source for the appliances in the home. All of these test help insure the home is safe and is a healthy environment for its occupants. By lowering these homes energy consumption, it benefits all of us by keeping our energy rates lower and enabling the energy source to allow more clients on the present grid system. We all need to conserve to allow this, building a new energy plant because the existing grids are full will surely raise all of our rates. It allows our clients to have more disposable income on other household or personal needs.





HEAD START



HEAD START IS A COMPREHENSIVE EARLY CHILDHOOD DEVELOPMENT PROGRAM FOR ECONOMICALLY DISADVANTAGED PRESCHOOL CHILDREN AND THEIR FAMILIES. THE OBJECTIVES OF THIS PROGRAM ARE:

1. To improve the child's health;
2. Aid the child's Intellectual, Social, and Emotional Development;
3. Improve and Expand the child's ability for self-expression; and
4. Help both the enrollees and their families gain greater confidence, self-respect, and dignity. Eligibility guidelines require that enrollees, including children with disabilities, are between three years of age and compulsory school attendance, and at least ninety percent are from low-income families.





Head Start Locations

Nashville Head Start * *

204-A Hazel Avenue
Nashville, GA 31639
(229 686-3085 F (229) 686-2030
E-Mail - nashville@cpheadstart.org

Ben Hill Head Start * * *

410 E. Altamaha Street
Fitzgerald, GA 31750
(229) 423-3191 F (229) 423-1021
E-Mail -benhill@cpheadstart.org

Cook Head Start * *

504 W. First Street
Adel, GA 31620
(229) 896-7322 F (229) 896-4275
E-Mail -cook@cpheadstart.org

Lowndes 1 Head Start * *

1613 Ulmer Avenue
Valdosta, GA 31601
(229) 244-6300 F (229) 244-8706
E-Mail - lowndes1@cpheadstart.org

Hallmark Heights Head Start * *

605 Hightower Street
Valdosta, GA 31601
(229) 244-7773 F (229) 244-7850
E-Mail - hallmark@cpheadstart.org

Brooks Head Start * *

1301 N. Martin Luther King Dr.
Quitman, GA 31643
(229) 263-5662 F (229) 263-5633
E-Mail - brooks@cpheadstart.org

Irwin Head Start * *

517 Fourth St.
Ocilla, GA 31774
(229) 468-5712 F (229) 468-7907
E-Mail - irwin@cpheadstart.org

Hahira Head Start * *

403 Main Street
Hahira, GA 31632
(229) 794-3310 F (229) 794-3323
E-Mail – hahira@cpheadstart.org

Lanier Head Start * * *

104 South Oak St.
Lakeland, GA 31635
(229) 482-3467 F (229) 482-3175
E-Mail - lanier@cpheadstart.org

BW Lester Head Start * * *

2522 Copeland Road
Valdosta, GA 31601
(229) 247-9750 F (229) 247-9751
E-Mail bwlester@cpheadstart.org

R L Mack Head Start * *

64 Tifton Eldorado
Tifton, GA 31794
(229) 382-5110 F (229) 387-6770
E-Mail - tift@cpheadstart.org

Turner County Head

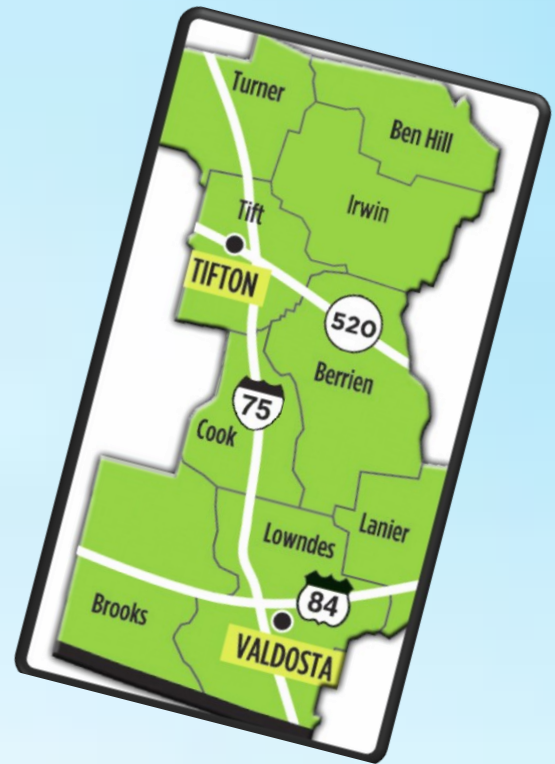
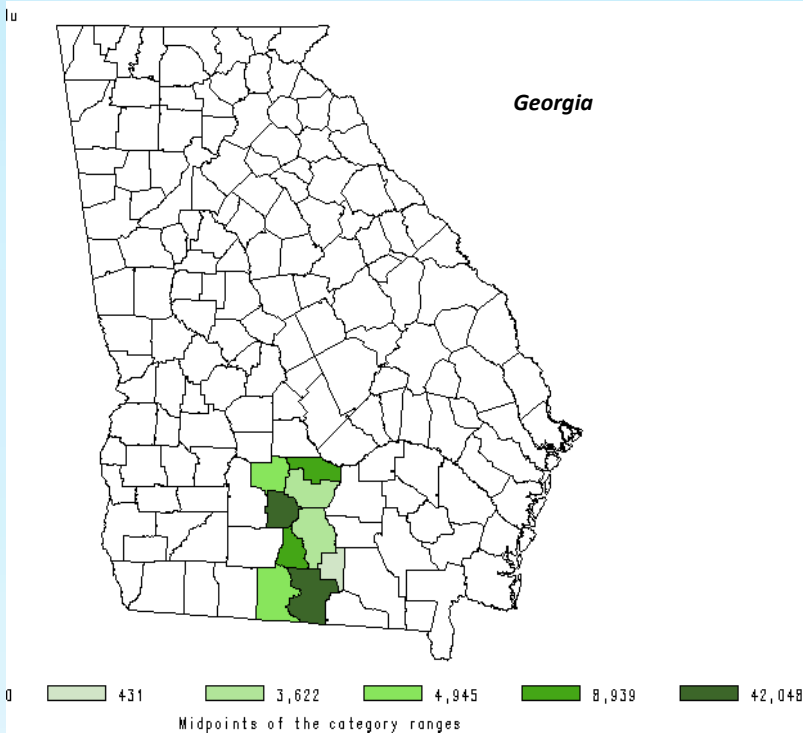
524 Martin Luther King Dr.
Ashburn, GA 31714
(229) 567-9233 F (229) 567-0876
E-Mail - turner@cpheadstart.org



Quality Rated Child Care of Georgia is a resource for parents and families to help them find high-quality child care, preschool, and Pre-K programs. Quality Rated has an online tool that helps families find child care in their area that have been evaluated by credentialed early childhood experts and deemed high-quality. Quality Rated assigns one, two or three stars, with three being the highest, to early education care programs that meet or exceed the minimum state requirements. Stars beside the center name signifies rating of each site.



Head Start Service Area



Ben Hill	254 Square Miles	Fitzgerald	5 Classrooms
Turner	290 Square Miles	Ashburn	2 Classrooms
Irwin	363 Square Miles	Ocilla	2 Classrooms
Tift	269 Square Miles	Tifton	7 Classrooms
Berrien	458 Square Miles	Nashville	2 Classrooms
Cook	233 Square Miles	Adel	4 Classrooms
Lanier	199 Square Miles	Lakeland	2 Classrooms
Brooks	498 Square Miles	Quitman	3 Classrooms
Lowndes	510 Square Miles	B.W. Lester	4 Classrooms
		Hahira	2 Classrooms
		Hallmark Heights	5 Classrooms
		Lowndes-I	10 Classrooms
9 Counties	3074 Square Miles	12Centers	48 Classrooms



HEAD START



The racial composition of the total children in Head Start served this year is Black 75%, White 16%, Hispanic 2%, and Multiracial 6%. Our current funded enrollment is 811. Materials are printed by Head Start in Spanish to accommodate the families. The rural farming area in South Georgia has attracted more each year.

Population Characteristics

Race and Ethnicity	# of children	
	⁽¹⁾ Hispanic or Latino origin	⁽²⁾ Non-Hispanic or Latino origin
a. American Indian or Alaska Native	0	0
b. Asian	0	1
c. Black or African American	2	716
d. Native Hawaiian or other Pacific Islander	0	0
e. White	11	137
f. Biracial/Multi-racial	14	46
g. Other – Hispanic, Arabic, and Haitian	22	5





HEAD START

Head Start Program Information 2019-2020

Centers	Children Riding Bus	Parental Status	
		Two	One
B.W. Lester	45	34	50
Ben Hill	46	12	86
Brooks	19	3	60
Cook	42	15	76
Hahira	0	13	19
Hallmark	0	9	92
Irwin	0	5	34
Lanier	0	5	31
Lowndes-I	36	17	168
Nashville	0	10	31
Tifton	22	18	130
Turner	0	3	33
Totals	210	144	810

ChldPlus.net PIR 2019-2020

As of March 2019

*Total # of
families served
954*





HEAD START



2019-2020 Program Enrollment Information

Counties	Income Eligible	Homeless	Foster	TANF	SSI
Berrien	34	0	0	0	1
Ben Hill	81	7	2	0	10
Brooks	56	0	0	0	4
Cook	74	0	4	3	9
Irwin	35	0	0	3	4
Lanier	30	0	0	0	2
Lowndes	328	2	7	4	36
Tifton	123	4	2	2	5
Turner	31	0	2	0	2
Totals	792	13	17	12	73

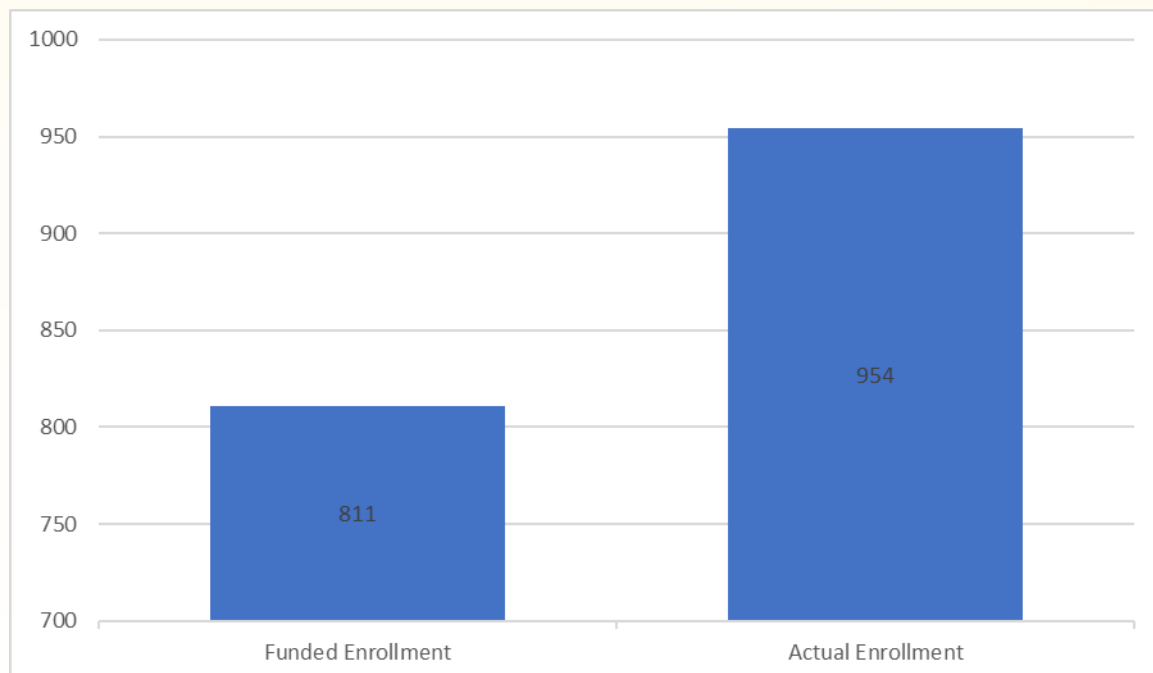


Head Start's average monthly enrollment was 99.5%

Age 3 year olds served – 666

Age 4 year olds served – 288

ChldPlus.net PIR 2019-2020

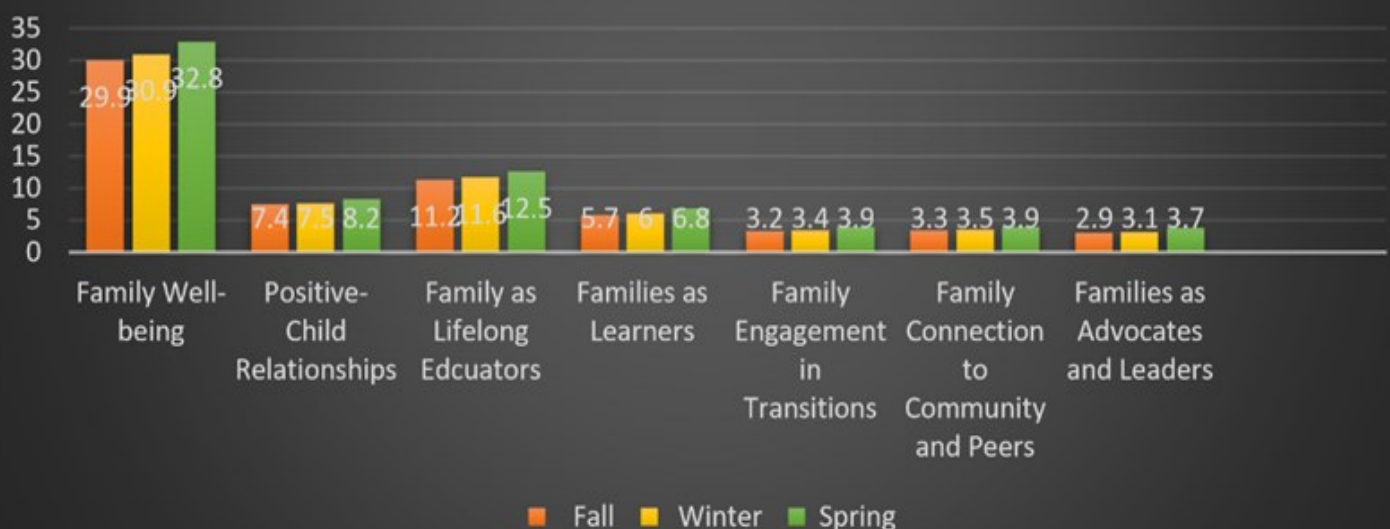


Head Start Family Engagement Outcomes

The family outcomes assessment report was completed for the fall, winter, and spring 2019-2020 school year. Head Start program made gains in all areas listed above although some increase only slightly. Covid-19 hit hard in March 2020 and school ended abruptly which could reflect the low increase in some of the areas. Due to school ending because of Covid-19, these numbers do not reflect a full school year.

The family health advocates and staff continued to work with the parents by telephone in assisting them in any way possible during this pandemic. They provided them with resources within the community to assist them with any needs that may arise and even gave the parents wellness/education packets so that the child can still learn while at home and the parents could still be involved with their child's education as the child's first teacher. The wellness packets consisted of masks, sanitizers, and information on Covid-19 and how to prevent it.

COASTAL PLAIN AREA E.O. A., HEAD START FAMILY ENGAGEMENT OUTCOMES FALL/WINTER/SPRING 2019-2020

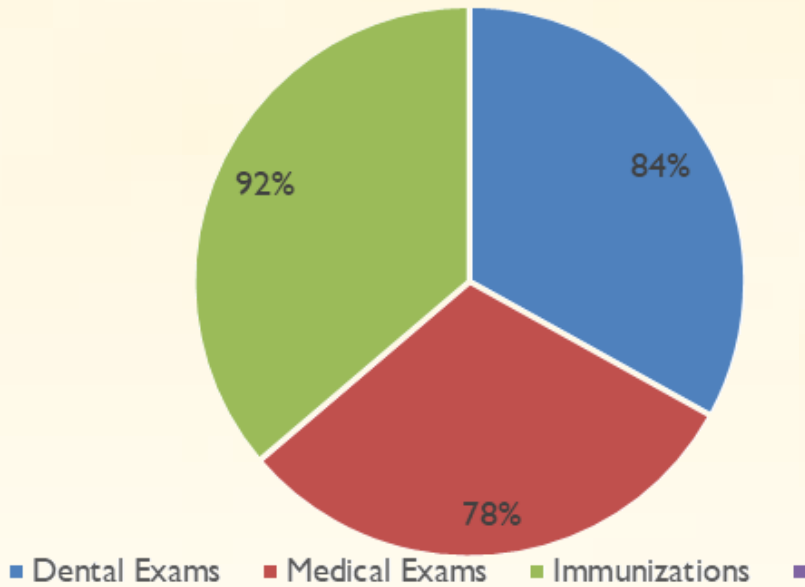




HEAD START

Medical and Dental Exams

Completed Preventive Care



2019-2020 Health Insurance Information

Counties	Medicaid	Private Insurance
Berrien	38	0
Ben Hill	95	2
Brooks	51	1
BW Lester	75	7
Cook	79	2
Hahira	29	3
Hallmark Heights	88	3
Irwin	39	0
Lanier	30	3
Lowndes 1	173	2
Tifton	98	3
Turner	33	3
TOTALS	828	29



PREVENTION OF COVID-19



1 WASH



2 COVER



3 CLEANED



4 AVOID



5 DON'T TOUCH



6 COOKED THOROUGHLY

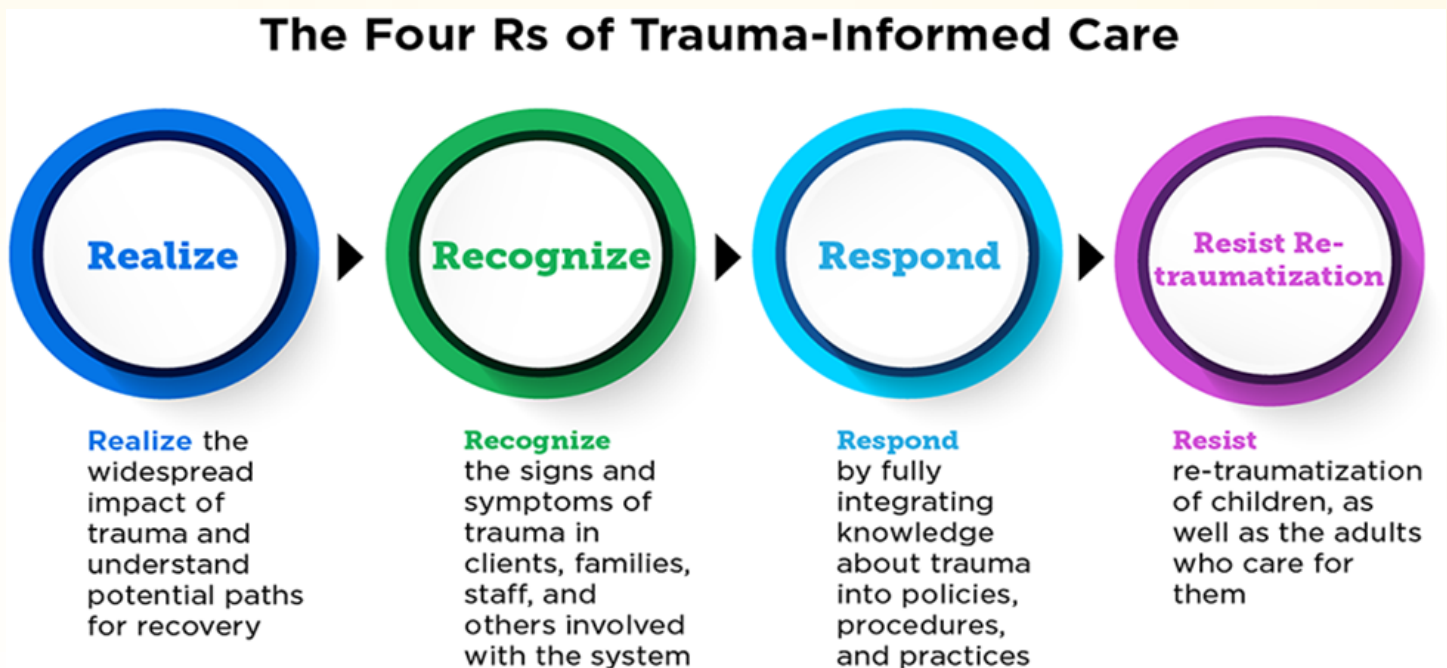
Coastal Plain Head Start would like to thank all the centers and area community agencies in working together to provide COVID-19 relief packages and food for the students and families of Head Start. Together, we were able to partner with local community agencies to ensure families were provided nutritional

Trauma-Informed Approach

Our Head Start program plays a critical role in buffering the impact of trauma by promoting resilience for children, families, and staff. The effects of trauma are lessened by protective factors such as strong parent-child relationships; relationships between staff, children, and families in Head Start programs; and through relationships and supports within the community. Supporting staff wellness is a critical part of any trauma-informed approach in Head Start programs.

Trauma occurs when frightening events or situations overwhelm a child or adult's ability to cope or deal with what has happened. These kinds of experiences cause an extended stress response and lasting effects on the physical and mental health of children and families. Traumatic events can be a single event (e.g., a terrible accident) or chronic (e.g., domestic violence), and there are many factors that affect the intensity of a person's response. Exposure to trauma is more common than most people believe. It is also multi-layered, with individual, community, and historical experiences. That said, not everyone exposed to adverse experiences is traumatized.

Our program is designed to implement a comprehensive, ongoing trauma-informed approach that provides all staff activities to implement the 4R's as one that:



This figure is adapted from: Substance Abuse and Mental Health Services Administration. (2014). SAMHSA's concept of trauma and Guidance for a trauma-informed approach. HHS publication no. (SMA) 14-4884. Rockville, MD: Substance Abuse and Mental Health Services Administration.

Results from Disability Services 2019-2020

Preschool Disability Services

<i>Diagnosed Primary Disabilities</i>	<i>Determined Disability</i>	<i>Receiving Services</i>
a. Health Impairment (meeting IDEA definition of “other health impairments”	107	107
b. Emotional/behavioral disorder	0	0
c. Speech or language impairments	25	25
d. Intellectual disabilities	0	0
e. Hearing impairments, including deafness	1	1
f. Orthopedic impairment	0	0
g. Visual impairment, including blindness	0	0
h. Learning disabilities	3	3
i. Autism	1	1
j. Traumatic brain injury	0	0
k. Non-categorical/development delay	1	1
l. Multiple disabilities	4	4
m. Deaf-blind	0	0



Results from Mental Health Services 2019-2020

Therapy Center Valdosta Counseling Services

<u>STUDENTS</u>	<u>STAFF</u>	<u>PARENTS</u>
43	1	5

Therapy Center Valdosta's mission is to provide services to the residents of Lowndes County and surrounding counties with evidenced based behavioral health services that are based on the unique situation of each individual's physical, emotional, and cognitive function. As a community partner, they have dedicated themselves to sustain and strengthen the well-being of individuals and families in the area to promote a healthier society.

Therapy Center Valdosta provides therapeutic counseling to patients of all ages coping with a variety of mental health issues. They provide face-to-face, tele-counseling, and phones service counseling in order to service individuals and families with issues related to depression, anxiety, marital issues, post-traumatic stress, work issues, anger management, stress management, and daily life stressors. Alcohol and drug abuse treatment is available for patients and their families through individual therapy, group therapy, and/or family therapy. Therapy Center Valdosta utilizes prevention, education, intervention, and/or continuing help based on the needs of the patient.





HEAD START



Public and Private Funds Received

Head Start	\$7,266,849.00
Non-federal match	\$1,816,713.00
Child & Adult Care Food Program	\$413,908.00
State funded Pre-K	\$238,411.00
TOTAL FUNDS RECEIVED	\$9,735,881.00



Budgetary Expenditures and Proposed Budget for the Fiscal Year

	Head Start Operating	HS T/TA	HS Non-Federal Match
Salaries	\$4,391,718.00		
Fringe Benefits	1,415,556.00		
Travel	61,086.00		
Equipment			
Supplies	117,990.00		
Contractual	77,000.00		
Construction			
Other	1,118,515.00	\$84,984.00	1,816,713.00
SUB-TOTAL	\$7,181,865.00	\$84,984.00	\$7,266,849.00
Overall Total	\$7,181,865.00	\$84,984.00	\$9,083,562.00

Results of Most Recent Financial Audit

Period ending March 31, 2019

Hudson & NeSmith, CPAs

Member

American Institute of Certified Public Accountants

Georgia Society of Certified Public Accountants

Private Companies Practice Section

INDEPENDENT AUDITOR'S REPORT

Report on the Financial Statements

We have audited the accompanying financial statements of Coastal Plain Area Economic Opportunity Authority, Inc. (a non-profit organization), which comprise the statement of financial position as of March 31, 2020, and the related statements activities, functional expenses, and cash flows for the year then ended, and the related notes to the financial statements.

Opinion

In our opinion, the financial statements referred to above present fairly, in all material respects, the financial position of Coastal Plain Area Economic Opportunity Authority, Inc., as of March 31, 2020, and the changes in its net assets and its cash flows for the year then ended in accordance with accounting principles generally accepted in the United States of America.

INDEPENDENT AUDITOR'S REPORT ON COMPLIANCE FOR EACH MAJOR PROGRAM AND ON INTERNAL CONTROL OVER COMPLIANCE REQUIRED BY THE UNIFORM GUIDANCE

Report on Compliance for Each Major Federal Program

We have audited Coastal Plain Area Economic Opportunity Authority, Inc.'s (a nonprofit organization) compliance with the types of compliance requirements described in the *OMB Compliance Supplement* that could have a direct and material effect on each of Coastal Plain Area Economic Opportunity Authority, Inc.'s major federal programs for the year ended March 31, 2020. Coastal Plain Area Economic Opportunity Authority, Inc.'s major federal programs are identified in the summary of auditor's results section of the accompanying schedule of findings and questioned costs.

Opinion on Each Major Federal Program

In our opinion, Coastal Plain Area Economic Opportunity Authority, Inc. complied, in all material respects, with the types of compliance requirements referred to above that could have a direct and material effect on each of its major federal programs for the year ended March 31, 2020.

SCHEDULE OF FINDINGS AND QUESTIONED COSTS (cont.)

YEAR ENDED MARCH 31, 2020

Section II – Financial Statement Findings

None

COASTAL PLAIN AREA ECONOMIC OPPORTUNITY AUTHORITY, INC.
SCHEDULE OF PROGRAM REVENUE
FOR YEAR ENDED MARCH 31, 2020

PROGRAM & CONTRACT NO.	FEDERAL & STATE REVENUE	PROGRAM & OTHER REVENUE	GRANTEE INKIND	TOTAL
CSBG - FY 20-21	\$ 225,269	\$ -	\$ -	\$ 225,269
CSBG - FY 19-20	283,450	-	-	283,450
Other Income CSBG	-	158	-	158
WX-DOE 19-20	138,262	-	-	138,262
WX-HHS 20-21	115,520	-	-	115,520
WX-HHS 19-20	147,931	-	-	147,931
GPC Earthcents Rebate Program		1,900	-	1,900
Head StartPA22 2020	7,380,485	-	1,866,368	9,246,853
Head StartPA20 2020	84,984	-	-	84,984
CACFP - Head Start 10/19-09/20 0421	388,478	-	-	388,478
CACFP - Head Start 10/18-09/19 0421	300,593	-	-	300,593
LIHEAP 18/19	1,301,732	-	-	1,301,732
LIHEAP 19/20	2,240,687	-	-	2,240,687
Pre-K 19/20	180,667	-	-	180,667
Pre-K 18/19	45,622	-	-	45,622
TOTAL	\$ 12,833,680	\$ 2,058	\$ 1,866,368	\$ 14,702,106

Most recent review- Results from CLASS Observations

A CLASS consultant came and conducted a review from **10/21/19-10/25/19**.

Observations were conducted in preschool center-based classrooms using the Pre-K Classroom Assessment Scoring System (CLASS). The CLASS tool look at three domains and ten dimensions of teacher-child interactions and measures those observed interactions on a seven point scale.

DOMAIN	Score	DOMAIN	Score	DOMAIN	Score
Emotional Support	6.09	Classroom Organization	5.81	Instructional Support	2.75

DIMENSIONS					
Positive Climate	6.03	Behavior Management	6.08	Concept Development	2.11
Negative Climate*	1.05	Productivity	6.02	Quality of Feedback	2.86
Teacher Sensitivity	5.94	Instructional Learning Formats	5.32	Language Modeling	3.28
Regard for Student Perspectives	5.43				

*Note: To calculate the Emotional Support domain, subtract the Negative Climate score from 8, add the Positive Climate, Teacher Sensitivity, and Regard for Student Perspective scores, then divide by 4.

OHS CLASS® Descriptive Statistics, 2019 National Grantee-Level Scores by Dimension					
Domain	Dimension	Mean	Standard Deviation	Minimum	Maximum
Emotional Support	Positive Climate	5.97	0.34	5.00	7.00
	Negative Climate	1.07	0.08	1.00	1.48
	Teacher Sensitivity	5.87	0.35	4.75	6.92
	Regard for Student Perspectives	5.43	0.42	3.88	6.50
Classroom Organization	Behavior Management	5.99	0.38	4.92	7.00
	Productivity	6.09	0.35	4.88	7.00
	Instructional Learning Formats	5.29	0.39	4.25	6.50
Instructional Support	Concept Development	2.43	0.44	1.44	4.00
	Quality of Feedback	2.88	0.47	1.88	4.41
	Language Modeling	3.42	0.51	2.12	4.67

Our Head Start program strives to ensure each child is prepared for their next educational experience. Creative Curriculum is used as our developmental guide for classroom activities. Each child is assessed using the Brigance Assessment tool. This tool evaluates children's early development and kindergarten readiness and assist teachers with identifying potential delays or giftedness, supporting referrals for services, and planning individualized instruction. In addition to Brigance, we use the Teaching Strategies Gold (TSG) assessment that aligns with Creative Curriculum. TSG is an ongoing, teacher observation based tool that ensures the success of the students. Our school readiness goals are listed below.



They are aligned with the state and local school systems goals and expectations.



Efforts to prepare children for kindergarten

Domain	School Readiness Goals 2019-2020
Language and Literacy	<ol style="list-style-type: none"> 1. Children will comprehend an increasingly complex and varied vocabulary. 2. Children will increase their use of language to communicate with adults and peers. (Children who are dual language learners will demonstrate proficiency in their home language while acquiring beginning proficiency in English.) 3. Children will use and understand print as meaningful and organized symbolic system of communication. 4. Children will identify names and sounds associated with letters and have an awareness that language can be broken down into words and syllables.
Cognition & General Knowledge	<ol style="list-style-type: none"> 5. Children will use scientific skills and methodology to gain a better understanding of information and activities in their surroundings. 6. Children will increase their skills in remembering information and in being aware of their own thinking. 7. Children will use math regularly and in everyday routines to count, compare, relate, identify patterns, and problem solve.
Approaches to Learning	<ol style="list-style-type: none"> 8. Children will show an interest in varied topics and activities, an eagerness to learn, creativity, and independence in their interactions with activities and materials. 9. Children will demonstrate persistence and sustained attention when working with materials, activities and information.
Physical Development and Health	<ol style="list-style-type: none"> 10. Children will maintain healthy and age appropriate physical well-being. 11. Children will develop safe and healthy habits. 12. Children will increase control of their small and large muscles.
Social & Emotional Development	<ol style="list-style-type: none"> 13. Children will engage in positive peer relationships and interactions with familiar adults and peers. 14. Children will learn to internalize (follow) classroom rules, routines, and directions.



Men4Men



Designed for fathers who wish to learn more about responsible fatherhood skills, traits and practices to support their families.

What We Offer

- Family Engagement Training
- Fatherhood Mentoring and Training
- GED Enrollment
- GED Preparedness
- Job Search/Placement
- Job Training
- One-on-one Counseling/Group Counseling
- Peer Group Session
- Professional Development Training
- Trauma/Health Counseling
- Volunteer Work Opportunity





Woman2Woman



This is a group designed for women to have a safe, reliable support system and allows women to discuss topics of their interest.



- Peer Group Session
- Motivational Speaker
- One-on-one Counseling/Group Counseling
- Group Wellness Activities





Coastal Plain Area E.O.A. Inc.
A COMMUNITY ACTION AGENCY

We would like to thank all of our Community Partners that collaborate with our agency to provide services for families and children.

Coastal Plain Area EOA, Inc.

Websites listed below to follow, and keep updated with events, job listings, and more.

www.coastalplain.org



www.twitter.com/@CPAEOA



www.instagram.com/Coastalplainvaldosta



Coastal Plain Area E.O.A., Inc.
1810 West Hill Avenue, Unit A6
Valdosta, GA. 31601
229-244-7860
229-245-7885 (fax)